

Datasheet for ABIN1322108  
**TAF7 Protein (AA 130-224) (GST tag)**



[Go to Product page](#)

1 Image

Overview

Quantity:	10 µg
Target:	TAF7
Protein Characteristics:	AA 130-224
Origin:	Human
Source:	Wheat germ
Protein Type:	Recombinant
Purification tag / Conjugate:	This TAF7 protein is labelled with GST tag.
Application:	ELISA, Western Blotting (WB), Affinity Purification (AP), Antibody Array (AA)

Product Details

Purpose:	TAF7 (Human) Recombinant Protein (Q01)
Sequence:	FIWNHGITLP LKNVRKRRFR KTAKKKYIES PDVEKEVKRL LSTDAAVST RWEIIAEDET KEAENQGLDI SSPGMSGHRQ GHDSLEHDEL REIFN
Characteristics:	Human TAF7 partial ORF ( AAH32737, 130 a.a. - 224 a.a.) recombinant protein with GST-tag at N-terminal.
Purification:	in vitro wheat germ expression system

Target Details

Target:	TAF7
Alternative Name:	TAF7 ( <a href="#">TAF7 Products</a> )

## Target Details

---

Background: Full Gene Name: TAF7 RNA polymerase II, TATA box binding protein (TBP)-associated factor, 55 kDa  
Synonyms: TAF2F,TAFII55

---

Gene ID: 6879

---

Pathways: [Intracellular Steroid Hormone Receptor Signaling Pathway](#)

---

## Application Details

---

Application Notes: Optimal working dilution should be determined by the investigator.

---

Comment: Preparation method: in vitro, wheat germ expression system  
Product Quality tested by: 12.5% SDS-PAGE Stained with Coomassie Blue.

---

Restrictions: For Research Use only

---

## Handling

---

Buffer: 50 mM Tris-HCl, 10 mM reduced Glutathione, pH =8.0 in the elution buffer.

---

Handling Advice: Aliquot to avoid repeated freezing and thawing.

---

Storage: -80 °C

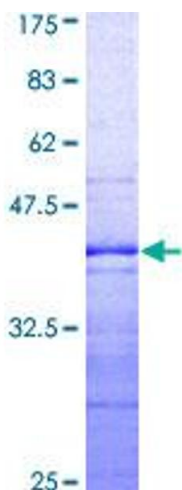
---

Storage Comment: Best use within three months from the date of receipt of this protein.

---

## Images

---



**Image 1.**