



[Go to Product page](#)

Datasheet for ABIN1322112

TAF8 Protein (AA 1-174) (GST tag)

1 Image

Overview

Quantity:	10 µg
Target:	TAF8
Protein Characteristics:	AA 1-174
Origin:	Human
Source:	Wheat germ
Protein Type:	Recombinant
Purification tag / Conjugate:	This TAF8 protein is labelled with GST tag.
Application:	ELISA, Western Blotting (WB), Affinity Purification (AP), Antibody Array (AA)

Product Details

Purpose:	TBN (Human) Recombinant Protein (P01)
Sequence:	MADAAATAGA GSGTRSGSK QSTNPADNYH LARRRTLQV VSSLLTEAGF ESAEKASVET LTEMLQSYIS EIGRSAKSYC EHTARTQPTL SDIVVTLVEM GFNVDTLPAY AKRSQRMVIT APPVTNQPVV PKALTAGQNR PHPPHIPSHF PEFDPPTYI KTPVSDEALG LRVV
Characteristics:	Human TBN full-length ORF (AAH33728.1, 1 a.a. - 174 a.a.) recombinant protein with GST-tag at N-terminal.
Purification:	in vitro wheat germ expression system

Target Details

Target:	TAF8
Alternative Name:	TAF8 (TAF8 Products)

Target Details

Background:	Full Gene Name: TAF8 RNA polymerase II, TATA box binding protein (TBP)-associated factor, 43 kDa Synonyms: 43,FLJ32821,II,TAF,TAFII43,TBN
Gene ID:	129685
Pathways:	Maintenance of Protein Location

Application Details

Application Notes:	Optimal working dilution should be determined by the investigator.
Comment:	Preparation method: in vitro, wheat germ expression system Product Quality tested by: 12.5% SDS-PAGE Stained with Coomassie Blue.
Restrictions:	For Research Use only

Handling

Buffer:	50 mM Tris-HCl, 10 mM reduced Glutathione, pH =8.0 in the elution buffer.
Handling Advice:	Aliquot to avoid repeated freezing and thawing.
Storage:	-80 °C
Storage Comment:	Best use within three months from the date of receipt of this protein.

Images

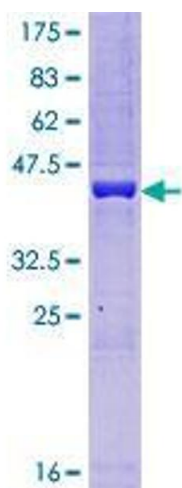


Image 1.