

Datasheet for ABIN1322130
TAM41 Protein (AA 1-316) (GST tag)



[Go to Product page](#)

1 Image

Overview

Quantity:	25 µg
Target:	TAM41 (TAMM41)
Protein Characteristics:	AA 1-316
Origin:	Human
Source:	Wheat germ
Protein Type:	Recombinant
Purification tag / Conjugate:	This TAM41 protein is labelled with GST tag.
Application:	ELISA, Western Blotting (WB), Affinity Purification (AP), Antibody Array (AA)

Product Details

Purpose:	TAMM41 (Human) Recombinant Protein (P01)
Sequence:	MALQTLQSSW VTFRKILSHF PEELSLAFVY GSGVYRQAGP SSDQKNAMLD FVFTVDDPVA WHSKNLKKNW SHYSFLKVLG PKIITSIQNN YGAGVYYNSL IMCNGRLIKY GVISTNVLIE DLLNWNLYI AGR LQKPKVI ISVNEDVTLR SALDRNLKSA VTA AFLMLPE SFSEEDLFIE IAGLSYSGDF RMVVGEDKTK VLNIVKPNIA HFRELYGSIL QENPQVYYS QQGWLEIDKS PEGQFTQLMT LPKTLQQQIN HIMDPPGKNR DVEETLFQVA HDPDCGDVVR LGLKKSVIYS SLKLHKMWKG WLRKTS
Characteristics:	Human TAMM41 full-length ORF (NP_620162.1, 1 a.a. - 316 a.a.) recombinant protein with GST-tag at N-terminal.
Purification:	in vitro wheat germ expression system

Target Details

Target:	TAM41 (TAMM41)
Alternative Name:	TAMM41 (TAMM41 Products)
Background:	Full Gene Name: TAM41, mitochondrial translocator assembly and maintenance protein, homolog (<i>S. cerevisiae</i>) Synonyms: C3orf31,TAM41
Gene ID:	132001
NCBI Accession:	NM_138807

Application Details

Application Notes:	Optimal working dilution should be determined by the investigator.
Comment:	Preparation method: in vitro, wheat germ expression system Product Quality tested by: 12.5% SDS-PAGE Stained with Coomassie Blue.
Restrictions:	For Research Use only

Handling

Buffer:	50 mM Tris-HCl, 10 mM reduced Glutathione, pH =8.0 in the elution buffer.
Handling Advice:	Aliquot to avoid repeated freezing and thawing.
Storage:	-80 °C
Storage Comment:	Best use within three months from the date of receipt of this protein.

Images

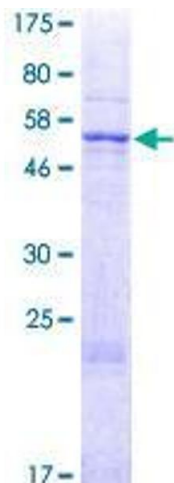


Image 1.