



[Go to Product page](#)

Datasheet for ABIN1322150

## TAPBPL Protein (AA 1-468) (GST tag)

### 1 Image

#### Overview

Quantity:	10 µg
Target:	TAPBPL
Protein Characteristics:	AA 1-468
Origin:	Human
Source:	Wheat germ
Protein Type:	Recombinant
Purification tag / Conjugate:	This TAPBPL protein is labelled with GST tag.
Application:	ELISA, Western Blotting (WB), Affinity Purification (AP), Antibody Array (AA)

#### Product Details

Purpose:	TAPBPL (Human) Recombinant Protein (P01)
Sequence:	MGTQEGWCLL LCLALSGAAE TKPHPAEGQW RAVDVVLDLDCF LVKDG AHRGA LASSEDRARA SLVLKQVPVL DDGSLEDFTD FQGGTLAQDD PPIIFEASVD LVQIPQAEAL LHADCSGKEV TCEISRYFLQ MTETTVKTAA WFMANVQVSG GGPSISLVMK TPRVAKNEVL WHPTLNPLPS PQGTVRTAVE FQVMTQTQSL SFLLGSSASL DCGFSMAPGL DLISVEWRLQ HKGRGQLVYS WTAGQQQAVR KGATLEPAQL GMARDASLTL PGLTIQDEGT YICQITTSLY RAQQIQLNI QASPKVRLSL ANEALLPTLI CDIAGYYPLD VVVTWTREEL GGSPAQVSGA SFSSLRQSV GTYSISSSLT AEPGSAGATY TCQVTHISLE EPLGASTQVV PPERRTALGV IFASSLFLLA LMFLGLQRRQ APTGLGLLQA ERWETTSCAD TQSSHLHEDR TARVSQPS
Characteristics:	Human TAPBPL full-length ORF ( NP_060479.2, 1 a.a. - 468 a.a.) recombinant protein with GST-tag at N-terminal.

## Product Details

---

Purification: in vitro wheat germ expression system

## Target Details

---

Target: TAPBPL

Alternative Name: TAPBPL ([TAPBPL Products](#))

Background: Full Gene Name: TAP binding protein-like  
Synonyms: FLJ10143,TAPBP-R,TAPBPR

Gene ID: 55080

NCBI Accession: [NM\\_018009](#)

## Application Details

---

Application Notes: Optimal working dilution should be determined by the investigator.

Comment: Preparation method: in vitro, wheat germ expression system  
Product Quality tested by: 12.5% SDS-PAGE Stained with Coomassie Blue.

Restrictions: For Research Use only

## Handling

---

Buffer: 50 mM Tris-HCl, 10 mM reduced Glutathione, pH =8.0 in the elution buffer.

Handling Advice: Aliquot to avoid repeated freezing and thawing.

Storage: -80 °C

Storage Comment: Best use within three months from the date of receipt of this protein.

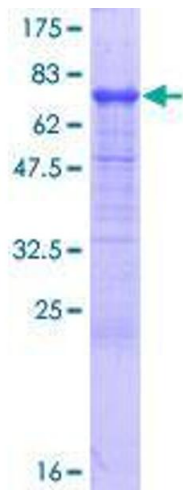


Image 1.