



Datasheet for ABIN1322164

TAS1R1 Protein (AA 281-380) (GST tag)



[Go to Product page](#)

1 Image

Overview

Quantity:	10 µg
Target:	TAS1R1
Protein Characteristics:	AA 281-380
Origin:	Human
Source:	Wheat germ
Protein Type:	Recombinant
Purification tag / Conjugate:	This TAS1R1 protein is labelled with GST tag.
Application:	Western Blotting (WB), ELISA, Affinity Purification (AP), Antibody Array (AA)

Product Details

Purpose:	TAS1R1 (Human) Recombinant Protein (Q01)
Sequence:	RVFFESVLT NLTGKVWVAS EAWALSRHIT GVPGIQRIGM VLGVAIQKRA VPGLKAFEEA YARADKEAPR PCHKGSWCSS NQLCRECQAF MAHTMPKLKA
Characteristics:	Human TAS1R1 partial ORF (NP_619642, 281 a.a. - 380 a.a.) recombinant protein with GST-tag at N-terminal.
Purification:	in vitro wheat germ expression system

Target Details

Target:	TAS1R1
Alternative Name:	TAS1R1 (TAS1R1 Products)

Target Details

Background: Full Gene Name: taste receptor, type 1, member 1
Synonyms: GPR70,T1R1,TR1,gm148

Gene ID: 80835

NCBI Accession: [NM_138697](#)

Application Details

Application Notes: Optimal working dilution should be determined by the investigator.

Comment: Preparation method: in vitro, wheat germ expression system
Product Quality tested by: 12.5% SDS-PAGE Stained with Coomassie Blue.

Restrictions: For Research Use only

Handling

Buffer: 50 mM Tris-HCl, 10 mM reduced Glutathione, pH =8.0 in the elution buffer.

Handling Advice: Aliquot to avoid repeated freezing and thawing.

Storage: -80 °C

Storage Comment: Best use within three months from the date of receipt of this protein.

Images

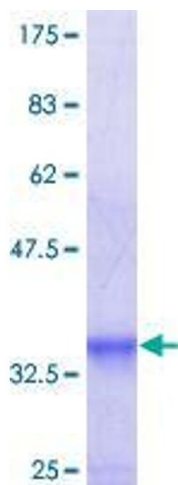


Image 1.