



[Go to Product page](#)

Datasheet for ABIN1322176

TAS2R43 Protein (AA 1-309) (GST tag)

1 Image

Overview

Quantity:	10 µg
Target:	TAS2R43
Protein Characteristics:	AA 1-309
Origin:	Human
Source:	Wheat germ
Protein Type:	Recombinant
Purification tag / Conjugate:	This TAS2R43 protein is labelled with GST tag.
Application:	ELISA, Western Blotting (WB), Affinity Purification (AP), Antibody Array (AA)

Product Details

Purpose:	TAS2R43 (Human) Recombinant Protein (P01)
Sequence:	MITFLPIIFS SLVVVTFVIG NFANGFIALV NSIESFKRQK ISFADQILTA LAVSRVGLLW VLLLNWYSTV LNPAFNSVEV RTTAYNIWAV INHFSNWLAT TLSIFYLLKI ANFSNFIFLH LKRRVKSVIL VMLLGPLLFL ACHLFVINMN EIVRTKEFEG NMTWKIKLKS AMYFSNMTVT MVANLVPFTL TLLSFMLLIC SLCKHLKMQ LRGKGSQDPS TKVHIKALQT VISFLLCAI YFLSIMISVW SFGSLENKPV FMFCKAIRFS YPSIHPFILI WGNKCLKQTF LSVFWQMRYW VKGEKTSSP
Characteristics:	Human TAS2R43 full-length ORF (AA117424.1, 1 a.a. - 309 a.a.) recombinant protein with GST-tag at N-terminal.
Purification:	in vitro wheat germ expression system

Target Details

Target:	TAS2R43
Alternative Name:	TAS2R43 (TAS2R43 Products)
Background:	Full Gene Name: taste receptor, type 2, member 43 Synonyms: T2R43,T2R52
Gene ID:	259289

Application Details

Application Notes:	Optimal working dilution should be determined by the investigator.
Comment:	Preparation method: in vitro, wheat germ expression system Product Quality tested by: 12.5% SDS-PAGE Stained with Coomassie Blue.
Restrictions:	For Research Use only

Handling

Buffer:	50 mM Tris-HCl, 10 mM reduced Glutathione, pH =8.0 in the elution buffer.
Handling Advice:	Aliquot to avoid repeated freezing and thawing.
Storage:	-80 °C
Storage Comment:	Best use within three months from the date of receipt of this protein.

Images

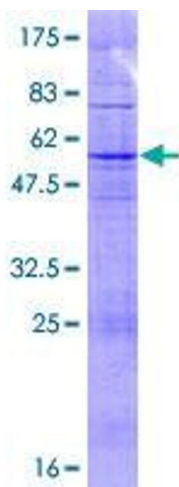


Image 1.