



[Go to Product page](#)

Datasheet for ABIN1322185

TAS2R9 Protein (AA 1-312) (GST tag)

1 Image

Overview

Quantity:	25 µg
Target:	TAS2R9
Protein Characteristics:	AA 1-312
Origin:	Human
Source:	Wheat germ
Protein Type:	Recombinant
Purification tag / Conjugate:	This TAS2R9 protein is labelled with GST tag.
Application:	ELISA, Western Blotting (WB), Affinity Purification (AP), Antibody Array (AA)

Product Details

Purpose:	TAS2R9 (Human) Recombinant Protein (P01)
Sequence:	MPSAIEAIYI ILIAGELTIG IWGNFIVLV NCIDWLKRRD ISLIDIILIS LAISRICLLC VISLDGFFML LFPGTYGNSV LVSIVNVVWT FANNSSLWFT SCLSIFYLLK IANISHPFFF WLKLNKINKVM LAILLGSFLI SLIISVPKND DMWYHLFKVS HEENITWKFK VSKIPGTFKQ LTLNLGVMVP FILCLISFFL LLFSLVRHTK QIRLHATGFR DPSTEAHMRA IKAVIIFLLL LIVYYPVFLV MTSSALIPQG KLVLMIGDIV TVIFPSSHFS ILIMGNSKLR EAFLKMLRFV KCFLRRRKPF VP
Characteristics:	Human TAS2R9 full-length ORF (NP_076406.1, 1 a.a. - 312 a.a.) recombinant protein with GST-tag at N-terminal.
Purification:	in vitro wheat germ expression system

Target Details

Target:	TAS2R9
Alternative Name:	TAS2R9 (TAS2R9 Products)
Background:	Full Gene Name: taste receptor, type 2, member 9 Synonyms: T2R9,TRB6
Gene ID:	50835
NCBI Accession:	NM_023917

Application Details

Application Notes:	Optimal working dilution should be determined by the investigator.
Comment:	Preparation method: in vitro, wheat germ expression system Product Quality tested by: 12.5% SDS-PAGE Stained with Coomassie Blue.
Restrictions:	For Research Use only

Handling

Buffer:	50 mM Tris-HCl, 10 mM reduced Glutathione, pH =8.0 in the elution buffer.
Handling Advice:	Aliquot to avoid repeated freezing and thawing.
Storage:	-80 °C
Storage Comment:	Best use within three months from the date of receipt of this protein.

Images

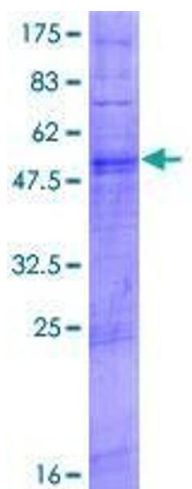


Image 1.