

Datasheet for ABIN1322198

TAX1BP3 Protein (AA 1-124) (GST tag)[Go to Product page](#)**1** Image

Overview

Quantity:	10 µg
Target:	TAX1BP3
Protein Characteristics:	AA 1-124
Origin:	Human
Source:	Wheat germ
Protein Type:	Recombinant
Purification tag / Conjugate:	This TAX1BP3 protein is labelled with GST tag.
Application:	ELISA, Western Blotting (WB), Affinity Purification (AP), Antibody Array (AA)

Product Details

Purpose:	TAX1BP3 (Human) Recombinant Protein (P01)
Sequence:	MSYIPGQPVT AVVQRVEIHK LRQGENLILG FSIGGGIDQD PSQNPFSEDK TDKGIYVTRV SEGGPAEIAG LQIGDKIMQV NGWDMTMVTH DQARKRLTKR SEEVVRLLVLT RQSLQKAVQQ SMLS
Characteristics:	Human TAX1BP3 full-length ORF (AAH23980, 1 a.a. - 124 a.a.) recombinant protein with GST-tag at N-terminal.
Purification:	in vitro wheat germ expression system

Target Details

Target:	TAX1BP3
Alternative Name:	TAX1BP3 (TAX1BP3 Products)

Target Details

Background:	Full Gene Name: Tax1 (human T-cell leukemia virus type I) binding protein 3 Synonyms: TIP-1
Gene ID:	30851
Pathways:	Monocarboxylic Acid Catabolic Process

Application Details

Application Notes:	Optimal working dilution should be determined by the investigator.
Comment:	Preparation method: in vitro, wheat germ expression system Product Quality tested by: 12.5% SDS-PAGE Stained with Coomassie Blue.
Restrictions:	For Research Use only

Handling

Buffer:	50 mM Tris-HCl, 10 mM reduced Glutathione, pH =8.0 in the elution buffer.
Handling Advice:	Aliquot to avoid repeated freezing and thawing.
Storage:	-80 °C
Storage Comment:	Best use within three months from the date of receipt of this protein.

Images

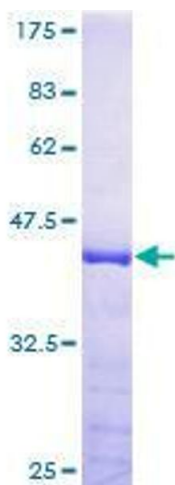


Image 1.