



[Go to Product page](#)

Datasheet for ABIN1322236

TBCB Protein (AA 1-244) (GST tag)

1 Image

Overview

Quantity:	10 µg
Target:	TBCB
Protein Characteristics:	AA 1-244
Origin:	Human
Source:	Wheat germ
Protein Type:	Recombinant
Purification tag / Conjugate:	This TBCB protein is labelled with GST tag.
Application:	Western Blotting (WB), ELISA, Affinity Purification (AP), Antibody Array (AA)

Product Details

Purpose:	TBCB (Human) Recombinant Protein (P01)
Sequence:	MEVTGVSAPT VTVFISSSLN TFRSEKRYSR SLTIAEFKCK LELLVGSPAS CMELELYGVD DKFYSKLDQE DALLGSYPVD DGCRIHVIDH SGARLGEYED VSRVEKYTIS QEAYDQRQDT VRSFLKRSKL GRYNEEERAQ QEAEAAQRLA EEKAQASSIP VGSRCVRAA GQSPRRGTVM YVGLTDFKPG YWIGVRYDEP LGKNDGSVNG KRYFECQAKY GAFVKPAVVT VGDFPEEDYG LDEI
Characteristics:	Human TBCB full-length ORF (AAH05969, 1 a.a. - 244 a.a.) recombinant protein with GST-tag at N-terminal.
Purification:	in vitro wheat germ expression system

Target Details

Target:	TBCB
---------	------

Target Details

Alternative Name:	TBCB (TBCB Products)
Background:	Full Gene Name: tubulin folding cofactor B Synonyms: CG22,CKAP1,CKAPI,MGC14625
Gene ID:	1155

Application Details

Application Notes:	Optimal working dilution should be determined by the investigator.
Comment:	Preparation method: in vitro, wheat germ expression system Product Quality tested by: 12.5% SDS-PAGE Stained with Coomassie Blue.
Restrictions:	For Research Use only

Handling

Buffer:	50 mM Tris-HCl, 10 mM reduced Glutathione, pH =8.0 in the elution buffer.
Handling Advice:	Aliquot to avoid repeated freezing and thawing.
Storage:	-80 °C
Storage Comment:	Best use within three months from the date of receipt of this protein.

Images

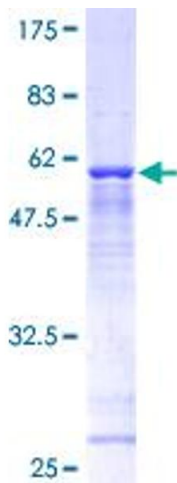


Image 1.