



[Go to Product page](#)

Datasheet for ABIN1322246

## TBCE Protein (AA 1-527) (GST tag)

### 1 Image

#### Overview

Quantity:	10 µg
Target:	TBCE
Protein Characteristics:	AA 1-527
Origin:	Human
Source:	Wheat germ
Protein Type:	Recombinant
Purification tag / Conjugate:	This TBCE protein is labelled with GST tag.
Application:	ELISA, Western Blotting (WB), Affinity Purification (AP), Antibody Array (AA)

#### Product Details

Purpose:	TBCE (Human) Recombinant Protein (P01)
Sequence:	MSDTLTADVI GRRVEVNGEH ATVRFAGVVP PVAGPWLGV E WDNPERGKHD GSHEGTVYFK CRHPTGGSFI RPNKVNFGTD FLTAIKNRYV LEDGPEEDRK EQIVTIGNKP VETIGFDSIM KQQSQLSKLQ EVSLRNCAVS CAGEKGGVAE ACPNIRKVDL SKNLLSSWDE VIHADQLRH LEVLNVSENK LKFPSSVLT GTLSVLKVLV LNQTGITWAE VLRCVAGCPG LEELYLESNN IFISERPTDV LQTVKLLDLS SNQLIDENQL YLIAHLPRLE QLILSDTGIS SLHFDPDAGIG CKTSMFPSLK YLVVNDNQIS QWSFFNELEK LPSLRALSCL RNPLTKEDKE AETARLLIIA SIGQLKTLNK CEILPEERRR AELDYRKAFG NEWKQAGGHK DPEKNRLEE FLTAHPRYQF LCLKYGAPED WELKTQQPLM LKNQLLTKI KYPHQLDQKV LEKQLPGSMT IQKVKGLLSR LLKVPVSDLL LSYESPCKPG REIELENDLK SLQFYSVENG DCLLVRW
Characteristics:	Human TBCE full-length ORF ( NP_003184.1, 1 a.a. - 527 a.a.) recombinant protein with GST-tag at N-terminal.

## Product Details

---

Purification: in vitro wheat germ expression system

## Target Details

---

Target: TBCE

Alternative Name: TBCE ([TBCE Products](#))

Background: Full Gene Name: tubulin folding cofactor E  
Synonyms: HRD,KCS,KCS1,pac2

Gene ID: 6905

## Application Details

---

Application Notes: Optimal working dilution should be determined by the investigator.

Comment: Preparation method: in vitro, wheat germ expression system  
Product Quality tested by: 12.5% SDS-PAGE Stained with Coomassie Blue.

Restrictions: For Research Use only

## Handling

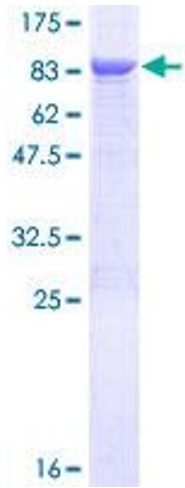
---

Buffer: 50 mM Tris-HCl, 10 mM reduced Glutathione, pH =8.0 in the elution buffer.

Handling Advice: Aliquot to avoid repeated freezing and thawing.

Storage: -80 °C

Storage Comment: Best use within three months from the date of receipt of this protein.



**Image 1.**