



[Go to Product page](#)

Datasheet for ABIN1322355

TCERG1L Protein (AA 1-545) (GST tag)

1 Image

Overview

Quantity:	25 µg
Target:	TCERG1L
Protein Characteristics:	AA 1-545
Origin:	Human
Source:	Wheat germ
Protein Type:	Recombinant
Purification tag / Conjugate:	This TCERG1L protein is labelled with GST tag.
Application:	ELISA, Western Blotting (WB), Affinity Purification (AP), Antibody Array (AA)

Product Details

Purpose:	TCERG1L (Human) Recombinant Protein (P01)
Sequence:	MVPGSAGLLR LSAGVVVPPV LLASAPPPAA PLLPGLPGWP APSEPVLPPL PLPSAPDSAA AAAAHPFPAL HGQWLFGGHS PSLGLPPSST VELVPVPHL CPSALATPIG KSWIDKRIPN CKIFFNNSFA LDSTWIHPPEE SRFFHGHEKP RLLANQVAVS LSRPAPASRP LPTVVLAPQP IPGGCHNSLK VTSSPAIAIA TAAAAAMVSV DPENLRGPSP SSVQPRHFLT LAPIKIPLRT SPVSDTRTER GRVARPPALM LRAQKSRDGD KEDKEPPMML GGGEDSTARG NRPVASTQVP GSPWCVVWTG DDRVFFFNPT MHLVWEKPM DLKDRGDLNR IEDPPHKRK LEAPATDNSD GSSSEDNRED QDVKTKRNR ECGGSPKPEE AKREDKGTRT PPPQILLPLE ERVTHFRDML LERGVSAFST WEKELHKIVF DPRYLLLNSE ERKQIFEQFV KTRIKEEYKE KSKLLLAKE EFKLLLEKSK VSPRTTFKEF AEKYGRDQRF RLVQKRKDQE HFFNKFILIL KKRDKENRLR LRKMR
Characteristics:	Human TCERG1L full-length ORF (NP_777597.1, 1 a.a. - 545 a.a.) recombinant protein with GST-tag at N-terminal.

Product Details

Purification: in vitro wheat germ expression system

Target Details

Target: TCERG1L

Alternative Name: TCERG1L ([TCERG1L Products](#))

Background: Full Gene Name: transcription elongation regulator 1-like
Synonyms: MGC126584

Gene ID: 256536

NCBI Accession: [NM_174937](#)

Application Details

Application Notes: Optimal working dilution should be determined by the investigator.

Comment: Preparation method: in vitro, wheat germ expression system
Product Quality tested by: 12.5% SDS-PAGE Stained with Coomassie Blue.

Restrictions: For Research Use only

Handling

Buffer: 50 mM Tris-HCl, 10 mM reduced Glutathione, pH =8.0 in the elution buffer.

Handling Advice: Aliquot to avoid repeated freezing and thawing.

Storage: -80 °C

Storage Comment: Best use within three months from the date of receipt of this protein.

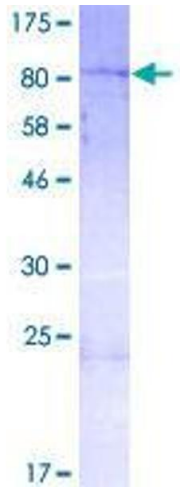


Image 1.