



Datasheet for ABIN1322377

TCF7L2 Protein (AA 490-596) (GST tag)[Go to Product page](#)**1** Image

Overview

Quantity:	10 µg
Target:	TCF7L2
Protein Characteristics:	AA 490-596
Origin:	Human
Source:	Wheat germ
Protein Type:	Recombinant
Purification tag / Conjugate:	This TCF7L2 protein is labelled with GST tag.
Application:	ELISA, Western Blotting (WB), Affinity Purification (AP), Antibody Array (AA)

Product Details

Purpose:	TCF7L2 (Human) Recombinant Protein (Q01)
Sequence:	SPNLLGSPPR DAKSQTEQTQ PLSLSLKPDP LAHLSMMPPP PALLAEATH KASALCPNGA LDLPPAALQP AAPSSSIAQP STSSLHSHSS LAGTQPQPLS LVTKSLE
Characteristics:	Human TCF7L2 partial ORF (NP_110383, 490 a.a. - 596 a.a.) recombinant protein with GST-tag at N-terminal.
Purification:	in vitro wheat germ expression system

Target Details

Target:	TCF7L2
Alternative Name:	TCF7L2 (TCF7L2 Products)

Target Details

Background:	Full Gene Name: transcription factor 7-like 2 (T-cell specific, HMG-box) Synonyms: TCF-4,TCF4
Gene ID:	6934
NCBI Accession:	NM_030756
Pathways:	WNT Signaling , Positive Regulation of Peptide Hormone Secretion , Peptide Hormone Metabolism , Regulation of Hormone Metabolic Process , Carbohydrate Homeostasis , Stem Cell Maintenance , Protein targeting to Nucleus

Application Details

Application Notes:	Optimal working dilution should be determined by the investigator.
Comment:	Preparation method: in vitro, wheat germ expression system Product Quality tested by: 12.5% SDS-PAGE Stained with Coomassie Blue.
Restrictions:	For Research Use only

Handling

Buffer:	50 mM Tris-HCl, 10 mM reduced Glutathione, pH =8.0 in the elution buffer.
Handling Advice:	Aliquot to avoid repeated freezing and thawing.
Storage:	-80 °C
Storage Comment:	Best use within three months from the date of receipt of this protein.

Images

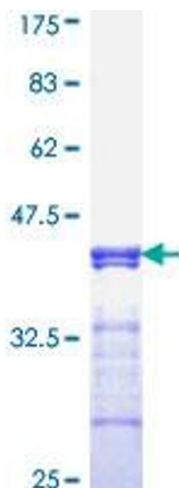


Image 1.