

Datasheet for ABIN1322381

## TCHHL1 Protein (AA 1-904) (GST tag)



[Go to Product page](#)

### 1 Image

#### Overview

Quantity:	10 µg
Target:	TCHHL1
Protein Characteristics:	AA 1-904
Origin:	Human
Source:	Wheat germ
Protein Type:	Recombinant
Purification tag / Conjugate:	This TCHHL1 protein is labelled with GST tag.
Application:	ELISA, Western Blotting (WB), Affinity Purification (AP), Antibody Array (AA)

#### Product Details

Purpose:	TCHHL1 (Human) Recombinant Protein (P01)
Sequence:	MPQLLRNVLC VIETFHKYAS EDSNGATLTG RELKQLIQGE FGDFQPCVL HAVEKNSNLL NIDSNGIISF DEFVLAIFNL LNLGYLDIKS LLSSELRQVT KPEKEKLDDV DVQATTGDGQ WTVGTSPTQE KRMLPSGMAS SSQLIPEESG AVGNRVDPW REAKTHNFPG EASEHNDPKN KHLEGDEQSQ EVAQDIQTTE DNEGQLKTNK PMAGSKKTSS PTERKGQDKE ISQEGDEPAR EQSVSKIRDQ FGEQEGNLAT QSSPPKEATQ RPCEDQEVRT EKEKHSNIQE PPLQREDEPS SQHADLPEQA AARSPSQTQK STDSKDVCRM FDTQEPGKDA DQTPAKTKNL GEPEDYGRTS ETQEKECETK DLPVQYGSRN GSETSDMRDE RKERRGPEAH GTAGQKERDR KTRPLVLETQ TQDGKYQELQ GLSKSKDAEK GSETQYLSSE GGDQTHPELE GTAVSGEEAE HTKEGTAEAF VNSKNAPAAE RTLGARERTQ DLAPLEKQSV GENTRVTKTH DQPVEEEDGY QGEDPESPFT QSDEGSSETP NSLASEEGNS SSETGELPVQ GDSQSQGDQH GESVQGGHNN NPDTQRQGTP GEKNRALEAV VPAVRGEDVQ LTEDQEQPAP GEHKNQPGT KGPGAAVEPN GHPEAQESTA

## Product Details

---

GDENRKSLEI EITGALDEDF TDQLSLMQLP GKGDSTRNELK VQGPSSKEEK GRATEAQNTL  
LESLDEDNSA SLKIQLETKE PVTSEEEDES PQELAGEGGD QKSPAKKEHN SSVPWSSLEK  
QMQRDQEPCS VERGAVYSSP LYQYLQEKIL QQTNVTQEEH QKQVQIAQAS GPELCSVSLT  
SEISDCSVFF NYSQASQPYT RGLPLDESPA GAQETPAPQA LEDKQGHPQR ERLVLQREAS TTKQ

Characteristics:	Human TCHHL1 full-length ORF ( NP_001008536.1, 1 a.a. - 904 a.a.) recombinant protein with GST-tag at N-terminal.
Purification:	in vitro wheat germ expression system

## Target Details

---

Target:	TCHHL1
Alternative Name:	TCHHL1 ( <a href="#">TCHHL1 Products</a> )
Background:	Full Gene Name: trichohyalin-like 1 Synonyms: S100A17,THHL1,basalin
Gene ID:	126637
NCBI Accession:	<a href="#">NM_001008536</a>

## Application Details

---

Application Notes:	Optimal working dilution should be determined by the investigator.
Comment:	Preparation method: in vitro, wheat germ expression system Product Quality tested by: 12.5% SDS-PAGE Stained with Coomassie Blue.
Restrictions:	For Research Use only

## Handling

---

Buffer:	50 mM Tris-HCl, 10 mM reduced Glutathione, pH =8.0 in the elution buffer.
Handling Advice:	Aliquot to avoid repeated freezing and thawing.
Storage:	-80 °C
Storage Comment:	Best use within three months from the date of receipt of this protein.

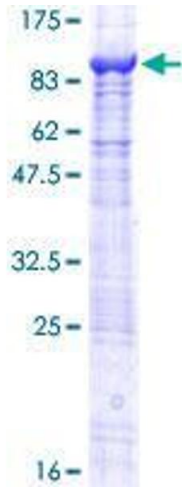


Image 1.