

Datasheet for ABIN1322422
TCTE3 Protein (AA 99-198) (GST tag)



[Go to Product page](#)

1 Image

Overview

Quantity:	10 µg
Target:	TCTE3
Protein Characteristics:	AA 99-198
Origin:	Human
Source:	Wheat germ
Protein Type:	Recombinant
Purification tag / Conjugate:	This TCTE3 protein is labelled with GST tag.
Application:	ELISA, Western Blotting (WB), Affinity Purification (AP), Antibody Array (AA)

Product Details

Purpose:	TCTE3 (Human) Recombinant Protein (Q01)
Sequence:	SVETKVQQIL TESLKDVKYD DKVFSHLSLE LADRILLAVK EFGYHRYKFI IKVLFIQKTG QAINIASRWI WDIAWDSWVA AKHEAESYVA LVLVFALYYE
Characteristics:	Human TCTE3 partial ORF (NP_777570, 99 a.a. - 198 a.a.) recombinant protein with GST-tag at N-terminal.
Purification:	in vitro wheat germ expression system

Target Details

Target:	TCTE3
Alternative Name:	TCTE3 (TCTE3 Products)

Target Details

Background:	Full Gene Name: t-complex-associated-testis-expressed 3 Synonyms: MGC142199,TCTEX1D3
Gene ID:	6991
NCBI Accession:	NM_174910

Application Details

Application Notes:	Optimal working dilution should be determined by the investigator.
Comment:	Preparation method: in vitro, wheat germ expression system Product Quality tested by: 12.5% SDS-PAGE Stained with Coomassie Blue.
Restrictions:	For Research Use only

Handling

Buffer:	50 mM Tris-HCl, 10 mM reduced Glutathione, pH =8.0 in the elution buffer.
Handling Advice:	Aliquot to avoid repeated freezing and thawing.
Storage:	-80 °C
Storage Comment:	Best use within three months from the date of receipt of this protein.

Images

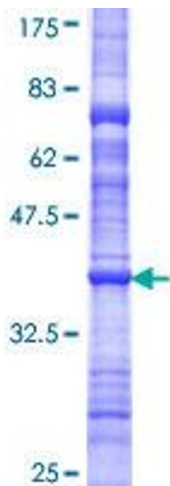


Image 1.