

Datasheet for ABIN1322442

TEAD2 Protein (AA 218-307) (GST tag)



[Go to Product page](#)

1 Image

Overview

Quantity:	10 µg
Target:	TEAD2
Protein Characteristics:	AA 218-307
Origin:	Human
Source:	Wheat germ
Protein Type:	Recombinant
Purification tag / Conjugate:	This TEAD2 protein is labelled with GST tag.
Application:	ELISA, Western Blotting (WB), Affinity Purification (AP), Antibody Array (AA)

Product Details

Purpose:	TEAD2 (Human) Recombinant Protein (Q01)
Sequence:	WQARGLG TAR LQLVEFSAFV EPPDAVDSYQ RHLFVHISQH CPSPGAPPLE SVDVRQIYDK FPEKKGGLRE LYDRGPPHAF FLVKFWADLN
Characteristics:	Human TEAD2 partial ORF (NP_003589, 218 a.a. - 307 a.a.) recombinant protein with GST-tag at N-terminal.
Purification:	in vitro wheat germ expression system

Target Details

Target:	TEAD2
Alternative Name:	TEAD2 (TEAD2 Products)

Target Details

Background:	Full Gene Name: TEA domain family member 2 Synonyms: ETF,TEF-4,TEF4
Gene ID:	8463
NCBI Accession:	NM_003598
Pathways:	Regulation of Lipid Metabolism by PPARalpha , Tube Formation

Application Details

Application Notes:	Optimal working dilution should be determined by the investigator.
Comment:	Preparation method: in vitro, wheat germ expression system Product Quality tested by: 12.5% SDS-PAGE Stained with Coomassie Blue.
Restrictions:	For Research Use only

Handling

Buffer:	50 mM Tris-HCl, 10 mM reduced Glutathione, pH =8.0 in the elution buffer.
Handling Advice:	Aliquot to avoid repeated freezing and thawing.
Storage:	-80 °C
Storage Comment:	Best use within three months from the date of receipt of this protein.

Images

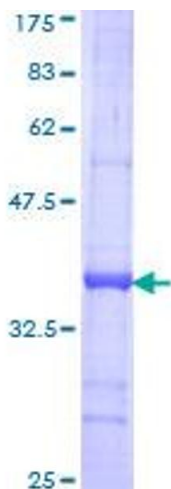


Image 1.