

Datasheet for ABIN1322493

TET1 Protein (AA 2038-2136) (GST tag)[Go to Product page](#)**1** Image

Overview

| | |
|-------------------------------|---|
| Quantity: | 10 µg |
| Target: | TET1 |
| Protein Characteristics: | AA 2038-2136 |
| Origin: | Human |
| Source: | Wheat germ |
| Protein Type: | Recombinant |
| Purification tag / Conjugate: | This TET1 protein is labelled with GST tag. |
| Application: | Western Blotting (WB), Affinity Purification (AP), Antibody Array (AA), ELISA |

Product Details

| | |
|------------------|---|
| Purpose: | CXXC6 (Human) Recombinant Protein (Q01) |
| Sequence: | RNHPTRLSLV FYQHKNLNKP QHGFELNLIK FEAKEAKNKK MKASEQKDQA ANEGPEQSSE VNELNQIPSH KALTLTHDNV VTVSPYALTH VAGPYNHWV |
| Characteristics: | Human CXXC6 partial ORF (NP_085128.1, 2038 a.a. - 2136 a.a.) recombinant protein with GST-tag at N-terminal. |
| Purification: | in vitro wheat germ expression system |

Target Details

| | |
|-------------------|--|
| Target: | TET1 |
| Alternative Name: | TET1 (TET1 Products) |

Target Details

| | |
|-----------------|--|
| Background: | Full Gene Name: tet oncogene 1 Synonyms: CXXC6,FLJ10839,FLJ41442,KIAA1676,LCX,bA119F7.1 |
| Gene ID: | 80312 |
| NCBI Accession: | NM_030625 |
| Pathways: | Stem Cell Maintenance , Warburg Effect |

Application Details

| | |
|--------------------|--|
| Application Notes: | Optimal working dilution should be determined by the investigator. |
| Comment: | Preparation method: in vitro, wheat germ expression system Product Quality tested by: 12.5% SDS-PAGE Stained with Coomassie Blue. |
| Restrictions: | For Research Use only |

Handling

| | |
|------------------|---|
| Buffer: | 50 mM Tris-HCl, 10 mM reduced Glutathione, pH =8.0 in the elution buffer. |
| Handling Advice: | Aliquot to avoid repeated freezing and thawing. |
| Storage: | -80 °C |
| Storage Comment: | Best use within three months from the date of receipt of this protein. |

Images

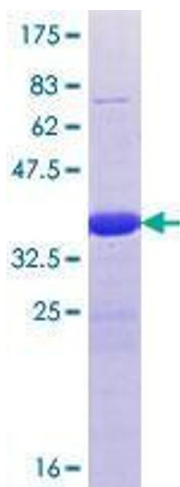


Image 1.