



[Go to Product page](#)

Datasheet for ABIN1322509

TEX261 Protein (AA 1-196) (GST tag)

1 Image

Overview

Quantity:	25 µg
Target:	TEX261
Protein Characteristics:	AA 1-196
Origin:	Human
Source:	Wheat germ
Protein Type:	Recombinant
Purification tag / Conjugate:	This TEX261 protein is labelled with GST tag.
Application:	ELISA, Western Blotting (WB), Affinity Purification (AP), Antibody Array (AA)

Product Details

Purpose:	TEX261 (Human) Recombinant Protein (P01)
Sequence:	MWFMYLSSWL SLFIQVAFIT LAVAAGLYYL AELIEEYTVV TSRIIKYMIW FSTAVLIGLY VFERFPTSMI GVGLFTNLVY FGLLQTFPFI MLTSPNFILS CGLVVVNHYL AFQFFAEEYY PFSEVLAYFT FCLWIIPFAF FVLSAGENV LPSTMQPGDD VVSNYFTK GK RGKRLGILVV FSFIKEAILP SRQKIY
Characteristics:	Human TEX261 full-length ORF (NP_653183.2, 1 a.a. - 196 a.a.) recombinant protein with GST-tag at N-terminal.
Purification:	in vitro wheat germ expression system

Target Details

Target:	TEX261
---------	--------

Target Details

Alternative Name:	TEX261 (TEX261 Products)
Background:	Full Gene Name: testis expressed 261 Synonyms: MGC32043,TEG-261
Gene ID:	113419
NCBI Accession:	NM_144582

Application Details

Application Notes:	Optimal working dilution should be determined by the investigator.
Comment:	Preparation method: in vitro, wheat germ expression system Product Quality tested by: 12.5% SDS-PAGE Stained with Coomassie Blue.
Restrictions:	For Research Use only

Handling

Buffer:	50 mM Tris-HCl, 10 mM reduced Glutathione, pH =8.0 in the elution buffer.
Handling Advice:	Aliquot to avoid repeated freezing and thawing.
Storage:	-80 °C
Storage Comment:	Best use within three months from the date of receipt of this protein.

Images

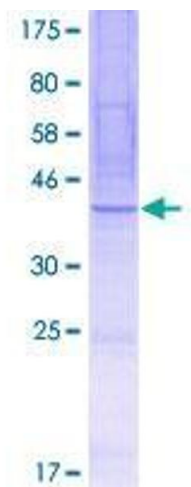


Image 1.