



[Go to Product page](#)

Datasheet for ABIN1322512

## TEX28 Protein (AA 1-410) (GST tag)

### 1 Image

#### Overview

Quantity:	10 µg
Target:	TEX28
Protein Characteristics:	AA 1-410
Origin:	Human
Source:	Wheat germ
Protein Type:	Recombinant
Purification tag / Conjugate:	This TEX28 protein is labelled with GST tag.
Application:	ELISA, Western Blotting (WB), Affinity Purification (AP), Antibody Array (AA)

#### Product Details

Purpose:	CXorf2 (Human) Recombinant Protein (P01)
Sequence:	MVLKAEHTRS PSATLPSNVP SCRSLSSSED GPSGPSSLAD GGLAHNLQDS VRHRILYLSE QLRVEKASRD GNTVSYLKLKLV SKADRHQVPH IQQAFEKVNQ RASATIAQIE HRLHQCHQQL QELEEGCRPE GLLLMAESDP ANCEPPSEKA LLSEPPEPGG EDGPVNLPHA SRPFILESRF QSLQGGTCL TEDVAQQQNL LLQKVKAELE EAKRFHISLQ ESYHSLKERS LTDLQLLLES LQEEKCRQAL MEEQVNGRLQ GQLNEIYNLK HNLACSEERM AYLSYERAKE IWEITETFKS RISKLEMLQQ VTQLEAAEHL QSRPPQMLFK FLSRRLSLAT VLLVVFVSTLC ACPSSLISSR LCTCTMLMLI GLGVLAWQRW RAIPATDWQE WVPSRCRLYS KDSGPPADGP
Characteristics:	Human CXorf2 full-length ORF ( AAH26183, 1 a.a. - 410 a.a.) recombinant protein with GST-tag at N-terminal.
Purification:	in vitro wheat germ expression system

## Target Details

Target:	TEX28
Alternative Name:	TEX28 ( <a href="#">TEX28 Products</a> )
Background:	Full Gene Name: testis expressed 28 Synonyms: CXorf2,fTEX
Gene ID:	1527

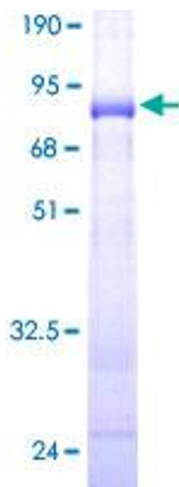
## Application Details

Application Notes:	Optimal working dilution should be determined by the investigator.
Comment:	Preparation method: in vitro, wheat germ expression system Product Quality tested by: 12.5% SDS-PAGE Stained with Coomassie Blue.
Restrictions:	For Research Use only

## Handling

Buffer:	50 mM Tris-HCl, 10 mM reduced Glutathione, pH =8.0 in the elution buffer.
Handling Advice:	Aliquot to avoid repeated freezing and thawing.
Storage:	-80 °C
Storage Comment:	Best use within three months from the date of receipt of this protein.

## Images



**Image 1.**