



[Go to Product page](#)

Datasheet for ABIN1322545

TFCP2 Protein (AA 1-502) (GST tag)

1 Image

Overview

Quantity:	25 µg
Target:	TFCP2
Protein Characteristics:	AA 1-502
Origin:	Human
Source:	Wheat germ
Protein Type:	Recombinant
Purification tag / Conjugate:	This TFCP2 protein is labelled with GST tag.
Application:	ELISA, Western Blotting (WB), Affinity Purification (AP), Antibody Array (AA)

Product Details

Purpose:	TFCP2 (Human) Recombinant Protein (P01)
Sequence:	MAWALKLPLA DEVIESGLVQ DFDASLSGIG QELGAGAYSM SDVLALPIFK QEESLPPDN ENKILPFQYV LCAATSPAVK LHDETLTYLN QGQSYEIRML DNRKLGELPE INGKLVKSIF RVVFHDRRLQ YTEHQLEGW RWNRPGRIL DIDIPMSVGI IDPRANPTQL NTVEFLWDPA KRTSVFIQVH CISTEFTMRK HGGEKGVPRF VQIDTFKENE NGEYTEHLHS ASCQIKVFKP KGADRKQKTD REKMEKRTPH EKEYQPSYE TTILTECSPW PEITYVNNSP SPGFNSSHSS FSLGEGNGSP NHQPEPPPPV TDNLLPTTTP QEAQQLHRN RFSTFTRLFT NFSGADLLKL TRDDVIQICG PADGIRLFNA LKGRMVRPRL TIYVCQESLQ LREQQQQQQQ QQQKHEDGDS NGTFFVYHAI YLEELTAVEL TEKIAQLFSI SPCQISQIYK QGPTGIHVLI SDEMIQNFQE EACFILDTMK AETNDSYHII LK
Characteristics:	Human TFCP2 full-length ORF (NP_005644.2, 1 a.a. - 502 a.a.) recombinant protein with GST-tag at N-terminal.

Product Details

Purification: in vitro wheat germ expression system

Target Details

Target: TFCP2

Alternative Name: TFCP2 ([TFCP2 Products](#))

Background: Full Gene Name: transcription factor CP2
Synonyms: CP2,LBP-1C,LSF,SEF,TFCP2C

Gene ID: 7024

NCBI Accession: [NM_005653](#)

Application Details

Application Notes: Optimal working dilution should be determined by the investigator.

Comment: Preparation method: in vitro, wheat germ expression system
Product Quality tested by: 12.5% SDS-PAGE Stained with Coomassie Blue.

Restrictions: For Research Use only

Handling

Buffer: 50 mM Tris-HCl, 10 mM reduced Glutathione, pH =8.0 in the elution buffer.

Handling Advice: Aliquot to avoid repeated freezing and thawing.

Storage: -80 °C

Storage Comment: Best use within three months from the date of receipt of this protein.

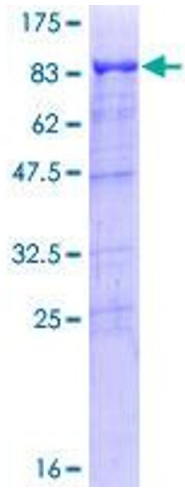


Image 1.