



[Go to Product page](#)

Datasheet for ABIN1322546

## TFCP2 Protein (AA 414-502) (GST tag)

### 1 Image

#### Overview

Quantity:	10 µg
Target:	TFCP2
Protein Characteristics:	AA 414-502
Origin:	Human
Source:	Wheat germ
Protein Type:	Recombinant
Purification tag / Conjugate:	This TFCP2 protein is labelled with GST tag.
Application:	ELISA, Western Blotting (WB), Affinity Purification (AP), Antibody Array (AA)

#### Product Details

Purpose:	TFCP2 (Human) Recombinant Protein (Q01)
Sequence:	KHEDGDSNGT FFVYHAIYLE ELTAVELTEK IAQLFSISPC QISQIYKQGP TGIHVLISDE MIQNFQEEAC FILDTMKAET NDSYHIILK
Characteristics:	Human TFCP2 partial ORF ( AAH03634, 414 a.a. - 502 a.a.) recombinant protein with GST-tag at N-terminal.
Purification:	in vitro wheat germ expression system

#### Target Details

Target:	TFCP2
Alternative Name:	TFCP2 ( <a href="#">TFCP2 Products</a> )

## Target Details

---

Background:	Full Gene Name: transcription factor CP2 Synonyms: CP2,LBP-1C,LSF,SEF,TFCP2C
Gene ID:	7024

---

## Application Details

---

Application Notes:	Optimal working dilution should be determined by the investigator.
Comment:	Preparation method: in vitro, wheat germ expression system Product Quality tested by: 12.5% SDS-PAGE Stained with Coomassie Blue.
Restrictions:	For Research Use only

---

## Handling

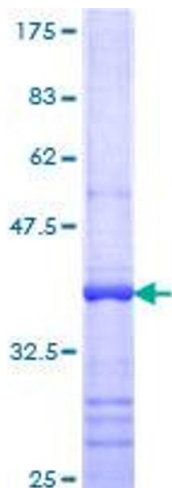
---

Buffer:	50 mM Tris-HCl, 10 mM reduced Glutathione, pH =8.0 in the elution buffer.
Handling Advice:	Aliquot to avoid repeated freezing and thawing.
Storage:	-80 °C
Storage Comment:	Best use within three months from the date of receipt of this protein.

---

## Images

---



**Image 1.**