



[Go to Product page](#)

Datasheet for ABIN1322548  
**TFCP2L1 Protein (GST tag)**

1 Image

Overview

Quantity:	10 µg
Target:	TFCP2L1
Origin:	Human
Source:	Wheat germ
Protein Type:	Recombinant
Purification tag / Conjugate:	This TFCP2L1 protein is labelled with GST tag.
Application:	ELISA, Western Blotting (WB), Antibody Array (AA), Affinity Purification (AP)

Product Details

Purpose:	TFCP2L1 (Human) Recombinant Protein (P01)
Sequence:	MLFWHTQPEH YNQHNHSGSYL RDVLALPIFK QEEPQLSPEN EARLPPLQYV LCAATSPAVK LHEETLYLN QGQSYEIRLL ENRKLGFDFQD LNTKYVKSII RVVFHRRRLQ YTEHQQLEGW RWSRPGDRIL DIDIPLSVGI LDPRASPTQL NAVEFLWDPA KRASAFIQVH CISTEFTPRK HGGEKGVVFPFR VQIDTFKQNE NGEYTEHLHS ASCQIKVFKP KGADRKQKTD REKMEKRTAQ EKEKYQPSYE TTILTECSPW PDVAYQVNSA PPSYNGSPN SFGLGEGNAS PTHPVEALPV GSDHLLPSAS IQDAQQLWHR NRFSQFCRLF ASFSGADLLK MSRDDLQVIC GPADGIRLFN AIKGRNVRPK MTIYVCQELE QNRVPLQQKR DSGGDSNLSV YHAIFLEELT TLELIEKIAN LYSISPQHIH RVYRQGPTGI HVVVSNEMVQ NFQDESCFVL STIKAESNDG YHIILKCGL
Characteristics:	Human TFCP2L1 full-length ORF ( AAH64698.1, 1 a.a. - 479 a.a.) recombinant protein with GST-tag at N-terminal.
Purification:	in vitro wheat germ expression system

## Target Details

Target:	TFCP2L1
Alternative Name:	TFCP2L1 ( <a href="#">TFCP2L1 Products</a> )
Background:	Gene: transcription factor CP2-like 1 Synonyms: CRTR1, LBP-9, LBP9
Gene ID:	29842

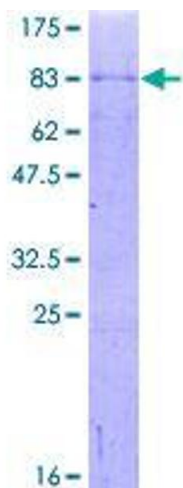
## Application Details

Application Notes:	Optimal working dilution should be determined by the investigator.
Restrictions:	For Research Use only

## Handling

Buffer:	50 mM Tris-HCl, 10 mM reduced Glutathione, pH =8.0 in the elution buffer.
Handling Advice:	Aliquot to avoid repeated freezing and thawing.
Storage:	-80 °C
Storage Comment:	Best use within three months from the date of receipt of this protein.

## Images



**Image 1.**