



Datasheet for ABIN1322554

DP2 Protein (AA 1-110) (GST tag)



[Go to Product page](#)

1 Image

Overview

Quantity:	10 µg
Target:	DP2 (TFDP2)
Protein Characteristics:	AA 1-110
Origin:	Human
Source:	Wheat germ
Protein Type:	Recombinant
Purification tag / Conjugate:	This DP2 protein is labelled with GST tag.
Application:	ELISA, Western Blotting (WB), Affinity Purification (AP), Antibody Array (AA)

Product Details

Purpose:	TFDP2 (Human) Recombinant Protein (Q01)
Sequence:	MIISTPQRLT SSGSVLIGSP YTPAPAMVTQ THIAEATGWV PGDRKRARKF IDSDFSESKR SKKGDKNKGK LRHFMSMKVCE KVQRKGTTSY NEVADELVSE FTNSNNHLAA
Characteristics:	Human TFDP2 partial ORF (NP_006277, 1 a.a. - 110 a.a.) recombinant protein with GST-tag at N-terminal.
Purification:	in vitro wheat germ expression system

Target Details

Target:	DP2 (TFDP2)
Alternative Name:	TFDP2 (TFDP2 Products)

Target Details

Background:	Full Gene Name: transcription factor Dp-2 (E2F dimerization partner 2) Synonyms: DP2,Dp-2
Gene ID:	7029
NCBI Accession:	NM_006286
Pathways:	Cell Division Cycle , Mitotic G1-G1/S Phases

Application Details

Application Notes:	Optimal working dilution should be determined by the investigator.
Comment:	Preparation method: in vitro, wheat germ expression system Product Quality tested by: 12.5% SDS-PAGE Stained with Coomassie Blue.
Restrictions:	For Research Use only

Handling

Buffer:	50 mM Tris-HCl, 10 mM reduced Glutathione, pH =8.0 in the elution buffer.
Handling Advice:	Aliquot to avoid repeated freezing and thawing.
Storage:	-80 °C
Storage Comment:	Best use within three months from the date of receipt of this protein.

Images

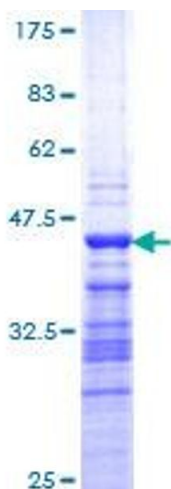


Image 1.