



[Go to Product page](#)

Datasheet for ABIN1322559

TFE3 Protein (AA 1-575) (GST tag)

1 Image

Overview

Quantity:	10 µg
Target:	TFE3
Protein Characteristics:	AA 1-575
Origin:	Human
Source:	Wheat germ
Protein Type:	Recombinant
Purification tag / Conjugate:	This TFE3 protein is labelled with GST tag.
Application:	Western Blotting (WB), ELISA, Affinity Purification (AP), Antibody Array (AA)

Product Details

Purpose:	TFE3 (Human) Recombinant Protein (P01)
Sequence:	<p>MSHAAEPARD GVEASAEGPR AVFVLLLEERR PADSAQLLSL NSLLPESGIV ADIELENVLD PDSFYELKSQ PLPLRSSLPI SLQATPATPA TLSASSSAGG SRTPAMSSSS SSRVLLRQQL MRAQAQEQR RERREQAAAA PFPSPAPASP AISVVGVSAG GHTLRPPPA QVPREVLKVQ THLENPTRYH LQQARRQVK QYLSTTLGPK LASQALTPPP GPASAQLPA PEAHTTGPT GSAPNSPMAL LTIGSSSEKE IDDDIVEIIS LESSYNDEML SYLPGGTTGL QLPSTLPVSG NLLDVYSSQG VATPAITVSN SCPAELPNIK REISETEAKA LLKERQKKN HNLIERRRRF NINDRIKELG TLIKSSDPE MRWNKGTILK ASVDYIRKLQ KEQQRSKDLE SRQRSLEQAN RSLQLRIQEL ELQAQIHGLP VPPTPGLLSL ATTSASDSLK PEQLDIEEEG RPGAATFHVG GGPAQNAPHQ QPPAPPSDAL LDHFPSDHL GDLGDPFHLG LEDILMEEEE GVVGGLSGGA LSPLRAASDP LLSSVSPAVS KASSRRSSFS MEEES</p>
Characteristics:	Human TFE3 full-length ORF (NP_006512.2, 1 a.a. - 575 a.a.) recombinant protein with GST-tag

Product Details

at N-terminal.

Purification: in vitro wheat germ expression system

Target Details

Target: TFE3

Alternative Name: TFE3 ([TFE3 Products](#))

Background: Full Gene Name: transcription factor binding to IGHM enhancer 3
Synonyms: RCCP2,TFEA,bHLHe33

Gene ID: 7030

NCBI Accession: [NM_006521](#)

Application Details

Application Notes: Optimal working dilution should be determined by the investigator.

Comment: Preparation method: in vitro, wheat germ expression system
Product Quality tested by: 12.5% SDS-PAGE Stained with Coomassie Blue.

Restrictions: For Research Use only

Handling

Buffer: 50 mM Tris-HCl, 10 mM reduced Glutathione, pH =8.0 in the elution buffer.

Handling Advice: Aliquot to avoid repeated freezing and thawing.

Storage: -80 °C

Storage Comment: Best use within three months from the date of receipt of this protein.

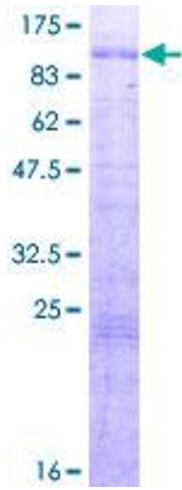


Image 1.