

Datasheet for ABIN1322575
TFG Protein (AA 1-400) (GST tag)



[Go to Product page](#)

1 Image

Overview

Quantity:	10 µg
Target:	TFG
Protein Characteristics:	AA 1-400
Origin:	Human
Source:	Wheat germ
Protein Type:	Recombinant
Purification tag / Conjugate:	This TFG protein is labelled with GST tag.
Application:	ELISA, Western Blotting (WB), Affinity Purification (AP), Antibody Array (AA)

Product Details

Purpose:	TFG (Human) Recombinant Protein (P01)
Sequence:	MNGQLDLSGK LIIKAQLGED IRRIPHNED ITYDELVLMM QRVFRGKLLS NDEVTIKYKD EDGDLITIFD SSDLSFAIQC SRILKLTFLV NGQPRPLESS QVKYLRRELI ELRNKVNRL DSLEPPGEPG PSTNIPENDT VDGREEKSAS DSSGKQSTQV MAASMSAFDP LKNQDEINKN VMSAFGLTDD QVSGPPSAPA EDRSGTPDSI ASSSSAAHPP GVQPQQPPYT GAQTQAGQIE GQMYQQYQQQ AGYGAQQPQA PPQQPQQYGI QYSASYSQQT GPQQPQQFQG YGQQPTSQAP APAFSGQPQQ LPAQPPQQYQ ASNYPAQTYT AQTSQPTNYT VAPASQPGMA PSQPGAYQPR PGFTSLPGST MTPPPSGPNP YARNRPPFGQ GYTQPGPGYR
Characteristics:	Human TFG full-length ORF (NP_001007566.1, 1 a.a. - 400 a.a.) recombinant protein with GST-tag at N-terminal.
Purification:	in vitro wheat germ expression system

Target Details

Target:	TFG
Alternative Name:	TFG (TFG Products)
Background:	Full Gene Name: TRK-fused gene Synonyms: FLJ36137,TF6,TRKT3
Gene ID:	10342
NCBI Accession:	NM_001007565

Application Details

Application Notes:	Optimal working dilution should be determined by the investigator.
Comment:	Preparation method: in vitro, wheat germ expression system Product Quality tested by: 12.5% SDS-PAGE Stained with Coomassie Blue.
Restrictions:	For Research Use only

Handling

Buffer:	50 mM Tris-HCl, 10 mM reduced Glutathione, pH =8.0 in the elution buffer.
Handling Advice:	Aliquot to avoid repeated freezing and thawing.
Storage:	-80 °C
Storage Comment:	Best use within three months from the date of receipt of this protein.

Images

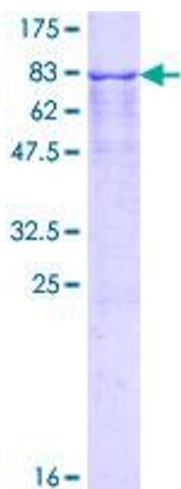


Image 1.