



[Go to Product page](#)

Datasheet for ABIN1322611

## TGFBR2 Protein (AA 1-334) (GST tag)

### 1 Image

#### Overview

Quantity:	10 µg
Target:	TGFBR2
Protein Characteristics:	AA 1-334
Origin:	Human
Source:	Wheat germ
Protein Type:	Recombinant
Purification tag / Conjugate:	This TGFBR2 protein is labelled with GST tag.
Application:	Western Blotting (WB), ELISA, Affinity Purification (AP), Antibody Array (AA)

#### Product Details

Purpose:	TGFBR2 (Human) Recombinant Protein (P01)
Sequence:	MGRGLLRGLW PLHIVLWTRI ASTIPPHVQK SVNNDMIVTD NNGAVKFPQL CKFCDVRFST CDNQKSCMSN CSITSICEKP QEVCVAVWRK NDENITLETV CHDPKLPYHD FILEDAASPK CIMKEKKKPG ETTFFMCSCSS DECNDNIIFS EEYNTSNPDL LLVIFQVTGI SLLPPLGVAI SVIIIFYCYR VNRQQKLSST WETGKTRKLM EFSEHCAILL EDDRSDISST CANNINHNTL LLPIELDTLV GKGRFAEVYK AKLKQNTSEQ FETVAVKIFP YEEYASWKTE KDIFSDINLK HENILQFLTA EERKTELGKQ YWLITAFHAK GNLQ
Characteristics:	Human TGFBR2 full-length ORF ( AAH40499.1, 1 a.a. - 334 a.a.) recombinant protein with GST-tag at N-terminal.
Purification:	in vitro wheat germ expression system

## Target Details

Target:	TGFBR2
Alternative Name:	TGFBR2 ( <a href="#">TGFBR2 Products</a> )
Background:	Full Gene Name: transforming growth factor, beta receptor II (70/80 kDa) Synonyms: AAT3,FAA3,LDS1B,LDS2B,MFS2,RIIC,TAAD2,TGFR-2,TGFbeta-RII
Gene ID:	7048

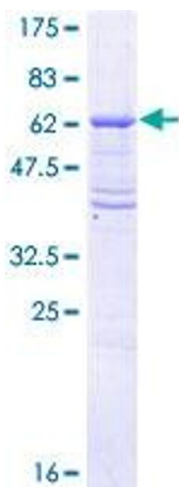
## Application Details

Application Notes:	Optimal working dilution should be determined by the investigator.
Comment:	Preparation method: in vitro, wheat germ expression system Product Quality tested by: 12.5% SDS-PAGE Stained with Coomassie Blue.
Restrictions:	For Research Use only

## Handling

Buffer:	50 mM Tris-HCl, 10 mM reduced Glutathione, pH =8.0 in the elution buffer.
Handling Advice:	Aliquot to avoid repeated freezing and thawing.
Storage:	-80 °C
Storage Comment:	Best use within three months from the date of receipt of this protein.

## Images



**Image 1.**