



[Go to Product page](#)

Datasheet for ABIN1322615

## TGFBR2 Protein (AA 62-165) (GST tag)

### 1 Image

#### Overview

Quantity:	10 µg
Target:	TGFBR2
Protein Characteristics:	AA 62-165
Origin:	Human
Source:	Wheat germ
Protein Type:	Recombinant
Purification tag / Conjugate:	This TGFBR2 protein is labelled with GST tag.
Application:	Western Blotting (WB), ELISA, Affinity Purification (AP), Antibody Array (AA)

#### Product Details

Purpose:	TGFBR2 (Human) Recombinant Protein (Q02)
Sequence:	IVTDNNGAVK FPQLCKFCDV RFSTCDNQKS CMSNCSITSI CEKPQEVCSVA VWRKNDENIT LETVCHDPKL PYHDFILED A ASPKCIMKEK KKPGETFFMC SCSS
Characteristics:	Human TGFBR2 partial ORF ( NP_001020018, 62 a.a. - 165 a.a.) recombinant protein with GST-tag at N-terminal.
Purification:	in vitro wheat germ expression system

#### Target Details

Target:	TGFBR2
Alternative Name:	TGFBR2 ( <a href="#">TGFBR2 Products</a> )

## Target Details

Background:	Full Gene Name: transforming growth factor, beta receptor II (70/80 kDa) Synonyms: AAT3,FAA3,LDS1B,LDS2B,MFS2,RIIC,TAAD2,TGFR-2,TGFbeta-RII
Gene ID:	7048
NCBI Accession:	<a href="#">NM_001024847</a>

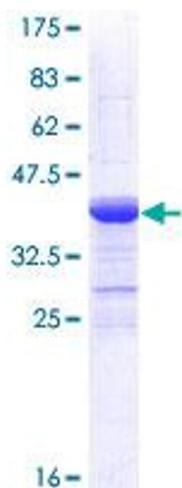
## Application Details

Application Notes:	Optimal working dilution should be determined by the investigator.
Comment:	Preparation method: in vitro, wheat germ expression system Product Quality tested by: 12.5% SDS-PAGE Stained with Coomassie Blue.
Restrictions:	For Research Use only

## Handling

Buffer:	50 mM Tris-HCl, 10 mM reduced Glutathione, pH =8.0 in the elution buffer.
Handling Advice:	Aliquot to avoid repeated freezing and thawing.
Storage:	-80 °C
Storage Comment:	Best use within three months from the date of receipt of this protein.

## Images



**Image 1.**