

Datasheet for ABIN1322659

**THAP10 Protein (AA 1-257) (GST tag)**[Go to Product page](#)**1** Image

## Overview

Quantity:	25 µg
Target:	THAP10
Protein Characteristics:	AA 1-257
Origin:	Human
Source:	Wheat germ
Protein Type:	Recombinant
Purification tag / Conjugate:	This THAP10 protein is labelled with GST tag.
Application:	ELISA, Western Blotting (WB), Affinity Purification (AP), Antibody Array (AA)

## Product Details

Purpose:	THAP10 (Human) Recombinant Protein (P01)
Sequence:	MPARCVAABC GNTTKSGKSL FRFPKDRVR LLWDRFVRGC RADWYGGNDR SVICSDHFAP ACFDVSSVIQ KNLRFSQLR LVAGAVPTLH RVPAPAPKRG EEGDQAGRLD TRGELQAARH SEAAPGPVSC TRPRAGKQAA ASQITCENEL VQTQPHADNP SNTVTSVPTH CEEGPVHKST QISLKRPRHR SVGIQAKVKA FGKRLCNATT QTEELWSRTS SLFDIYSSDS ETDTDWDIKS EQSDLSYMAV QVKEETC
Characteristics:	Human THAP10 full-length ORF ( NP_064532.1, 1 a.a. - 257 a.a.) recombinant protein with GST-tag at N-terminal.
Purification:	in vitro wheat germ expression system

## Target Details

Target:	THAP10
Alternative Name:	THAP10 ( <a href="#">THAP10 Products</a> )
Background:	Full Gene Name: THAP domain containing 10 Synonyms:
Gene ID:	56906
NCBI Accession:	<a href="#">NM_020147</a>

## Application Details

Application Notes:	Optimal working dilution should be determined by the investigator.
Comment:	Preparation method: in vitro, wheat germ expression system Product Quality tested by: 12.5% SDS-PAGE Stained with Coomassie Blue.
Restrictions:	For Research Use only

## Handling

Buffer:	50 mM Tris-HCl, 10 mM reduced Glutathione, pH =8.0 in the elution buffer.
Handling Advice:	Aliquot to avoid repeated freezing and thawing.
Storage:	-80 °C
Storage Comment:	Best use within three months from the date of receipt of this protein.

## Images

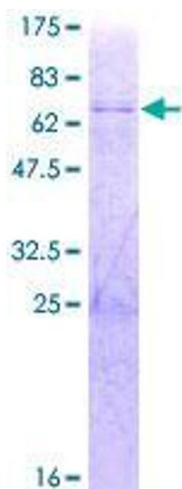


Image 1.