



Datasheet for ABIN1322662

THAP2 Protein (AA 1-228) (GST tag)



[Go to Product page](#)

1 Image

Overview

Quantity:	10 µg
Target:	THAP2
Protein Characteristics:	AA 1-228
Origin:	Human
Source:	Wheat germ
Protein Type:	Recombinant
Purification tag / Conjugate:	This THAP2 protein is labelled with GST tag.
Application:	ELISA, Western Blotting (WB), Affinity Purification (AP), Antibody Array (AA)

Product Details

Purpose:	THAP2 (Human) Recombinant Protein (P01)
Sequence:	MPTNCAAAGC ATTYNKHINI SFHRFPLDPK RRKEWVRLVR RKNFVPGKHT FLCSKHFEAS CFDLTGQTRR LKMDAVPTIF DFCTHIKSMK LKSRNLLKKN NSCSPAGPSN LKSNISSQQV LLEHSYAFRN PMEAKKRIK LEKEIASLRR KMKTCLQKER RATRRWIKAT CLVKNLEANS VLPKGTSEHM LPTALSSLPL EDFKILEQDQ QDKTLLSLNL KQTKSTFI
Characteristics:	Human THAP2 full-length ORF (NP_113623.1, 1 a.a. - 228 a.a.) recombinant protein with GST-tag at N-terminal.
Purification:	in vitro wheat germ expression system

Target Details

Target:	THAP2
---------	-------

Target Details

Alternative Name: THAP2 ([THAP2 Products](#))

Background: Full Gene Name: THAP domain containing, apoptosis associated protein 2
Synonyms: DKFZp564I0422

Gene ID: 83591

NCBI Accession: [NM_031435](#)

Application Details

Application Notes: Optimal working dilution should be determined by the investigator.

Comment: Preparation method: in vitro, wheat germ expression system
Product Quality tested by: 12.5% SDS-PAGE Stained with Coomassie Blue.

Restrictions: For Research Use only

Handling

Buffer: 50 mM Tris-HCl, 10 mM reduced Glutathione, pH =8.0 in the elution buffer.

Handling Advice: Aliquot to avoid repeated freezing and thawing.

Storage: -80 °C

Storage Comment: Best use within three months from the date of receipt of this protein.

Images

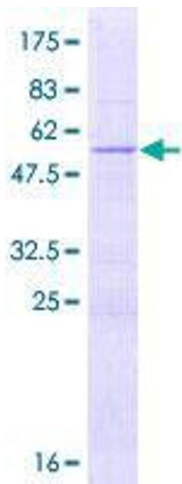


Image 1.