



[Go to Product page](#)

Datasheet for ABIN1322670

THAP7 Protein (AA 1-309) (GST tag)

1 Image

Overview

Quantity:	25 µg
Target:	THAP7
Protein Characteristics:	AA 1-309
Origin:	Human
Source:	Wheat germ
Protein Type:	Recombinant
Purification tag / Conjugate:	This THAP7 protein is labelled with GST tag.
Application:	ELISA, Western Blotting (WB), Affinity Purification (AP), Antibody Array (AA)

Product Details

Purpose:	THAP7 (Human) Recombinant Protein (P01)
Sequence:	MPRHCSAAGC CTRDTRETRN RGISFHRLPK KDNPRRGLWL ANCQRLDPSG QGLWDPASEY IYFCSKHFEEDCFELVGISG YHRLKEGAVP TIFESFSKLR RTTKTKGHSY PPGPEVSRL RRCRKRCSEG RGPTTPFSPP PPADVTCFPV EEASAPATLP ASPAGRLEPG LSSPFSDLLG PLGAQADEAG CSAQSPERQ PSPLEPRPVS PSAYMLRLPP PAGAYIQNEH SYQVGSALLW KRRAEAALDA LDKAQRQLQA CKRREQLRL RLTKLQQERA REKRAQADAR QTLKEHVQDF AMQLSSMA
Characteristics:	Human THAP7 full-length ORF (AAH04346.1, 1 a.a. - 309 a.a.) recombinant protein with GST-tag at N-terminal.
Purification:	in vitro wheat germ expression system

Target Details

Target:	THAP7
Alternative Name:	THAP7 (THAP7 Products)
Background:	Full Gene Name: THAP domain containing 7 Synonyms: MGC10963
Gene ID:	80764

Application Details

Application Notes:	Optimal working dilution should be determined by the investigator.
Comment:	Preparation method: in vitro, wheat germ expression system Product Quality tested by: 12.5% SDS-PAGE Stained with Coomassie Blue.
Restrictions:	For Research Use only

Handling

Buffer:	50 mM Tris-HCl, 10 mM reduced Glutathione, pH =8.0 in the elution buffer.
Handling Advice:	Aliquot to avoid repeated freezing and thawing.
Storage:	-80 °C
Storage Comment:	Best use within three months from the date of receipt of this protein.

Images

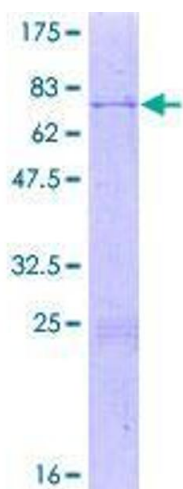


Image 1.