



[Go to Product page](#)

Datasheet for ABIN1322671

THAP8 Protein (AA 1-274) (GST tag)

1 Image

Overview

Quantity:	10 µg
Target:	THAP8
Protein Characteristics:	AA 1-274
Origin:	Human
Source:	Wheat germ
Protein Type:	Recombinant
Purification tag / Conjugate:	This THAP8 protein is labelled with GST tag.
Application:	ELISA, Western Blotting (WB), Affinity Purification (AP), Antibody Array (AA)

Product Details

Purpose:	THAP8 (Human) Recombinant Protein (P01)
Sequence:	MPKYCRAPNC SNTAGRLGAD NRPVSFYKFP LKDGPRQLQAW LQHMGCEHWV PSCHQHLCSE HFTPSCFQWR WGVRYLRPDA VPSIFSRGPP AKSQRRTTRST QKPVSPPPPPL QKNTPLPQSP AIPVSGPVRL VVLGPTSGSP KTVATMLLTP LAPAPTPERS QPEVPAQQAQ TGLGPVLGAL QRRVRLQRC QERHQAQLQA LERLAQQLHG ESSLARARRG LQRLTTAQTL GPEESQTFTI ICGGPDIAMV LAQDPAPATV DAKPELLDTR IPSA
Characteristics:	Human THAP8 full-length ORF (NP_689871.1, 1 a.a. - 274 a.a.) recombinant protein with GST-tag at N-terminal.
Purification:	in vitro wheat germ expression system

Target Details

Target:	THAP8
Alternative Name:	THAP8 (THAP8 Products)
Background:	Full Gene Name: THAP domain containing 8 Synonyms: FLJ32891
Gene ID:	199745
NCBI Accession:	NM_152658

Application Details

Application Notes:	Optimal working dilution should be determined by the investigator.
Comment:	Preparation method: in vitro, wheat germ expression system Product Quality tested by: 12.5% SDS-PAGE Stained with Coomassie Blue.
Restrictions:	For Research Use only

Handling

Buffer:	50 mM Tris-HCl, 10 mM reduced Glutathione, pH =8.0 in the elution buffer.
Handling Advice:	Aliquot to avoid repeated freezing and thawing.
Storage:	-80 °C
Storage Comment:	Best use within three months from the date of receipt of this protein.

Images

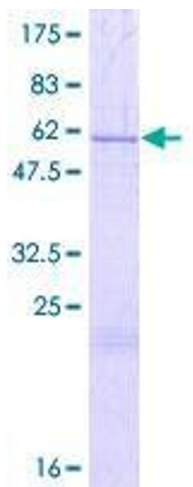


Image 1.