



[Go to Product page](#)

Datasheet for ABIN1322677

THEG Protein (AA 1-379) (GST tag)

1 Image

Overview

Quantity:	10 µg
Target:	THEG
Protein Characteristics:	AA 1-379
Origin:	Human
Source:	Wheat germ
Protein Type:	Recombinant
Purification tag / Conjugate:	This THEG protein is labelled with GST tag.
Application:	ELISA, Western Blotting (WB), Affinity Purification (AP), Antibody Array (AA)

Product Details

Purpose:	THEG (Human) Recombinant Protein (P01)
Sequence:	MGDSRRRSLG NQPSSEAAGR SEREQDGDPR GLQSSVYESR RVTDPERQDL DNAELGPEDP EEELPPEEVA GEEFPETLDP KEALSELERV LDKDLEEDIP EISRLSISQK LPSTTMTKAR KRRRRRRLME LAEPKINWQV LKDRKGRCGK GYAWISPCKM SLHFCLCWPS VYWTERFLED TTLTITVPAV SRRVEELSRP KRFYLEYYNN NRTTPVWPIP RSSLEYRASS RLKELAAPKI RDNFWSMPMS EVSQVSRAAQ MAVPSSRILQ LSKPKAPATL LEEWDPVPKP KPHVSDHNRL LHLARPKAQS DKCVPDRDPR WEVLDVTKKV VASPRIISLA KPKVRKGLNE GYDRRPLASM SLPPPASPE KCDQPRPGL
Characteristics:	Human THEG full-length ORF (AAH28574, 1 a.a. - 379 a.a.) recombinant protein with GST-tag at N-terminal.
Purification:	in vitro wheat germ expression system

Target Details

Target:	THEG
Alternative Name:	THEG (THEG Products)
Background:	Full Gene Name: Theg homolog (mouse) Synonyms: MGC26138
Gene ID:	51298

Application Details

Application Notes:	Optimal working dilution should be determined by the investigator.
Comment:	Preparation method: in vitro, wheat germ expression system Product Quality tested by: 12.5% SDS-PAGE Stained with Coomassie Blue.
Restrictions:	For Research Use only

Handling

Buffer:	50 mM Tris-HCl, 10 mM reduced Glutathione, pH =8.0 in the elution buffer.
Handling Advice:	Aliquot to avoid repeated freezing and thawing.
Storage:	-80 °C
Storage Comment:	Best use within three months from the date of receipt of this protein.

Images

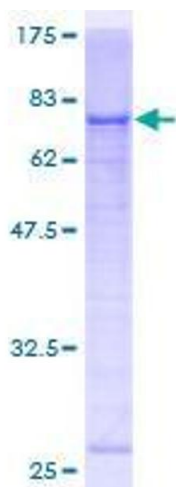


Image 1.