

Datasheet for ABIN1322685
THEM5 Protein (AA 1-247) (GST tag)



[Go to Product page](#)

1 Image

Overview

Quantity:	10 µg
Target:	THEM5
Protein Characteristics:	AA 1-247
Origin:	Human
Source:	Wheat germ
Protein Type:	Recombinant
Purification tag / Conjugate:	This THEM5 protein is labelled with GST tag.
Application:	ELISA, Western Blotting (WB), Affinity Purification (AP), Antibody Array (AA)

Product Details

Purpose:	THEM5 (Human) Recombinant Protein (P01)
Sequence:	MIRRCFQVAA RLGHHRGLLE APRILPRLNP ASAFGSSTDS MFSRFLPEKT DLKDYALPNA SWCSDMLSLY QEFLEKTKSS GWIKLPSFKS NRDHIRGLKL PSGLAVSSDK GDCRIFTRCI QVEGQGFYEV IFFQPTQKKS VCLFQPGSYL EGPPGFAHGG SLAAMMDETf SKTAFLAGEG LFTLSLNIRF KNLIPVDSL VMDVEVDKIE DQKLYMSCIA HSRDQQTYYA KSSGVFLQLQ LEEESPQ
Characteristics:	Human THEM5 full-length ORF (NP_872384.1, 1 a.a. - 247 a.a.) recombinant protein with GST-tag at N-terminal.
Purification:	in vitro wheat germ expression system

Target Details

Target:	THEM5
---------	-------

Target Details

Alternative Name:	THEM5 (THEM5 Products)
Background:	Full Gene Name: thioesterase superfamily member 5 Synonyms: FLJ37964,MGC126659,MGC138444
Gene ID:	284486
NCBI Accession:	NM_182578

Application Details

Application Notes:	Optimal working dilution should be determined by the investigator.
Comment:	Preparation method: in vitro, wheat germ expression system Product Quality tested by: 12.5% SDS-PAGE Stained with Coomassie Blue.
Restrictions:	For Research Use only

Handling

Buffer:	50 mM Tris-HCl, 10 mM reduced Glutathione, pH =8.0 in the elution buffer.
Handling Advice:	Aliquot to avoid repeated freezing and thawing.
Storage:	-80 °C
Storage Comment:	Best use within three months from the date of receipt of this protein.

Images

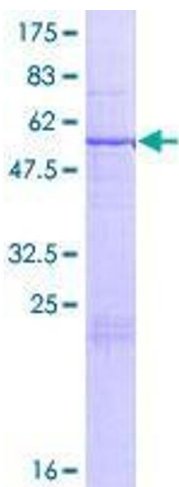


Image 1.