

Datasheet for ABIN1322707

**THOC6 Protein (AA 71-180) (GST tag)**[Go to Product page](#)**1** Image

## Overview

|                               |   |
|-------------------------------|---|
| Quantity:                     | 10 µg   |
| Target:                       | THOC6   |
| Protein Characteristics:      | AA 71-180   |
| Origin:                       | Human   |
| Source:                       | Wheat germ  |
| Protein Type:                 | Recombinant   |
| Purification tag / Conjugate: | This THOC6 protein is labelled with GST tag.                                  |
| Application:                  | ELISA, Western Blotting (WB), Affinity Purification (AP), Antibody Array (AA) |

## Product Details

|                  |   |
|------------------|---|
| Purpose:         | WDR58 (Human) Recombinant Protein (Q01)   |
| Sequence:        | TFQAHDGPVY SMVSTDRHLL SAGDGEVKAW LWAEMLKKGK KELWRRQPPY RTSLEVPEIN<br>ALLLVPKENS LILAGGDCQL HTMDLETGTF TRVLRGHTDY IHCLALRERS |
| Characteristics: | Human WDR58 partial ORF ( NP_077315, 71 a.a. - 180 a.a.) recombinant protein with GST-tag at N-terminal.                    |
| Purification:    | in vitro wheat germ expression system   |

## Target Details

|                   |  |
|-------------------|--|
| Target:           | THOC6                                    |
| Alternative Name: | THOC6 ( <a href="#">THOC6 Products</a> ) |

## Target Details

|                 |  |
|-----------------|--|
| Background:     | Full Gene Name: THO complex 6 homolog (Drosophila)<br>Synonyms: MGC2655,WDR58,fSAP35 |
| Gene ID:        | 79228  |
| NCBI Accession: | <a href="#">NM_024339</a>  |

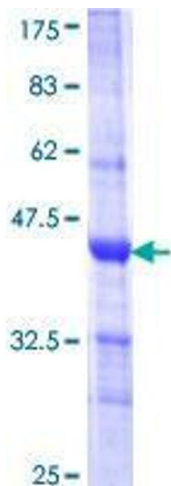
## Application Details

|                    |  |
|--------------------|--|
| Application Notes: | Optimal working dilution should be determined by the investigator.   |
| Comment:           | Preparation method: in vitro, wheat germ expression system<br>Product Quality tested by: 12.5% SDS-PAGE Stained with Coomassie Blue. |
| Restrictions:      | For Research Use only  |

## Handling

|                  |   |
|------------------|---|
| Buffer:          | 50 mM Tris-HCl, 10 mM reduced Glutathione, pH =8.0 in the elution buffer. |
| Handling Advice: | Aliquot to avoid repeated freezing and thawing.                           |
| Storage:         | -80 °C  |
| Storage Comment: | Best use within three months from the date of receipt of this protein.    |

## Images



**Image 1.**