

Datasheet for ABIN1322709
THOC7 Protein (AA 1-204) (GST tag)



[Go to Product page](#)

1 Image

Overview

Quantity:	10 µg
Target:	THOC7
Protein Characteristics:	AA 1-204
Origin:	Human
Source:	Wheat germ
Protein Type:	Recombinant
Purification tag / Conjugate:	This THOC7 protein is labelled with GST tag.
Application:	ELISA, Western Blotting (WB), Affinity Purification (AP), Antibody Array (AA)

Product Details

Purpose:	THOC7 (Human) Recombinant Protein (P01)
Sequence:	MGAVTDDEVI RKRLIDGDG AGGDRRINLL VKSFIKWCNS GSQEEGYSQY QRMLSTLSQC EFSMGKTLV YDMNLREMEN YEKIYKEIEC SIAGAHEKIA ECKKQILQAK RIRKNRQEYD ALAKVIQHHP DRHETLKELE ALGKELEHLS HIKESVEDKL ELRRKQFHV LSTIHELQQT LENDEKLSEV EEAQEASMES DPKP
Characteristics:	Human THOC7 full-length ORF (NP_079351.1, 1 a.a. - 204 a.a.) recombinant protein with GST-tag at N-terminal.
Purification:	in vitro wheat germ expression system

Target Details

Target:	THOC7
---------	-------

Target Details

Alternative Name:	THOC7 (THOC7 Products)
Background:	Full Gene Name: THO complex 7 homolog (Drosophila) Synonyms: FLJ23445,NIF3L1BP1,fSAP24
Gene ID:	80145
NCBI Accession:	NM_025075

Application Details

Application Notes:	Optimal working dilution should be determined by the investigator.
Comment:	Preparation method: in vitro, wheat germ expression system Product Quality tested by: 12.5% SDS-PAGE Stained with Coomassie Blue.
Restrictions:	For Research Use only

Handling

Buffer:	50 mM Tris-HCl, 10 mM reduced Glutathione, pH =8.0 in the elution buffer.
Handling Advice:	Aliquot to avoid repeated freezing and thawing.
Storage:	-80 °C
Storage Comment:	Best use within three months from the date of receipt of this protein.

Images

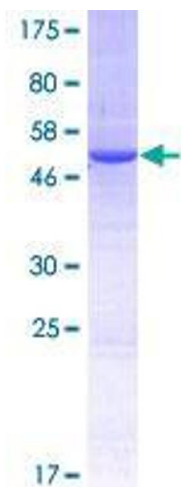


Image 1.