



[Go to Product page](#)

Datasheet for ABIN1322731

THUMPD1 Protein (AA 1-353) (GST tag)

1 Image

Overview

Quantity:	10 µg
Target:	THUMPD1
Protein Characteristics:	AA 1-353
Origin:	Human
Source:	Wheat germ
Protein Type:	Recombinant
Purification tag / Conjugate:	This THUMPD1 protein is labelled with GST tag.
Application:	ELISA, Western Blotting (WB), Affinity Purification (AP), Antibody Array (AA)

Product Details

Purpose:	THUMPD1 (Human) Recombinant Protein (P01)
Sequence:	MAAPAQTTQ PGGGKRKGKA QYVLAKRARR CDAGGPRQLE PGLQGILITC NMNERKCVVEE AYSLLENEYGD DMYGPEKFTD KDQQPSGSEG EDDDAEAALK KEVGDIKAST EMRLRRFQSV ESGANNVFI RTLGIEPEKL VHHILQDMYK TKKKKTRVIL RMLPISGTCK AFLEDMKKYA ETFLEPWFKA PNKGTQIVY KSRNNSHVNR EEVIRELAGI VCTLNSENKV DLTNPQYTVV VEIHKAVCCL SVVKDYMLFR KYNLQEVVKS PKDPSQLNSK QGNGKEAKLE SADKSDQNNT AEGKNNQVQP ENTEELGQTK PTSNPQVVNE GGAKPELASQ ATEGSKSNEN DFS
Characteristics:	Human THUMPD1 full-length ORF (AAH00448, 1 a.a. - 353 a.a.) recombinant protein with GST-tag at N-terminal.
Purification:	in vitro wheat germ expression system

Target Details

Target:	THUMPD1
Alternative Name:	THUMPD1 (THUMPD1 Products)
Background:	Full Gene Name: THUMP domain containing 1 Synonyms: DKFZp686C1054
Gene ID:	55623

Application Details

Application Notes:	Optimal working dilution should be determined by the investigator.
Comment:	Preparation method: in vitro, wheat germ expression system Product Quality tested by: 12.5% SDS-PAGE Stained with Coomassie Blue.
Restrictions:	For Research Use only

Handling

Buffer:	50 mM Tris-HCl, 10 mM reduced Glutathione, pH =8.0 in the elution buffer.
Handling Advice:	Aliquot to avoid repeated freezing and thawing.
Storage:	-80 °C
Storage Comment:	Best use within three months from the date of receipt of this protein.

Images

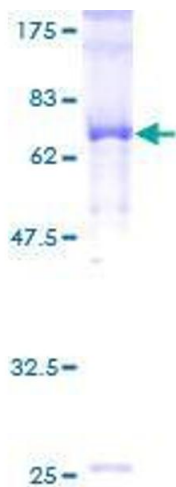


Image 1.