



[Go to Product page](#)

Datasheet for ABIN1322740

## THYN1 Protein (AA 1-166) (GST tag)

### 1 Image

#### Overview

Quantity:	10 µg
Target:	THYN1
Protein Characteristics:	AA 1-166
Origin:	Human
Source:	Wheat germ
Protein Type:	Recombinant
Purification tag / Conjugate:	This THYN1 protein is labelled with GST tag.
Application:	Western Blotting (WB), ELISA, Affinity Purification (AP), Antibody Array (AA)

#### Product Details

Purpose:	THYN1 (Human) Recombinant Protein (P01)
Sequence:	MSRPRKRLAG TSGSDKGLSG KRTKTENSGE ALAKVEDSNP QKTSATKNCL KNLSSHWMK SEPEsrLEKG VDVkFSIEDL KAqPKQttCW DGVRNYQARN FLRAMKLGEe AFFYHSNCKE PGIAGLMKIV KEAYPDHTQF EKNNPHYDPS SKEDNPKWSM KSLILF
Characteristics:	Human THYN1 full-length ORF ( NP_954994.1, 1 a.a. - 166 a.a.) recombinant protein with GST-tag at N-terminal.
Purification:	in vitro wheat germ expression system

#### Target Details

Target:	THYN1
Alternative Name:	THYN1 ( <a href="#">THYN1 Products</a> )

## Target Details

Background:	Full Gene Name: thymocyte nuclear protein 1 Synonyms: HSPC144,MDS012,MGC12187,MY105,THY28,THY28KD
Gene ID:	29087
NCBI Accession:	<a href="#">NM_199297</a>

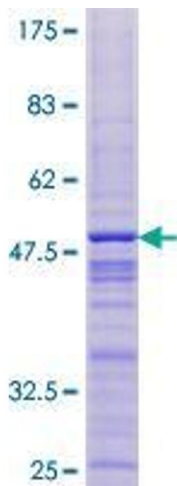
## Application Details

Application Notes:	Optimal working dilution should be determined by the investigator.
Comment:	Preparation method: in vitro, wheat germ expression system Product Quality tested by: 12.5% SDS-PAGE Stained with Coomassie Blue.
Restrictions:	For Research Use only

## Handling

Buffer:	50 mM Tris-HCl, 10 mM reduced Glutathione, pH =8.0 in the elution buffer.
Handling Advice:	Aliquot to avoid repeated freezing and thawing.
Storage:	-80 °C
Storage Comment:	Best use within three months from the date of receipt of this protein.

## Images



**Image 1.**