



Datasheet for ABIN1322769

## TIMM17B Protein (AA 1-172) (GST tag)



[Go to Product page](#)

### 1 Image

#### Overview

Quantity:	10 µg
Target:	TIMM17B
Protein Characteristics:	AA 1-172
Origin:	Human
Source:	Wheat germ
Protein Type:	Recombinant
Purification tag / Conjugate:	This TIMM17B protein is labelled with GST tag.
Application:	ELISA, Western Blotting (WB), Affinity Purification (AP), Antibody Array (AA)

#### Product Details

Purpose:	TIMM17B (Human) Recombinant Protein (P01)
Sequence:	MEEYAREPCP WRIVDDCGGA FTMGVIGGGV FQAIKGF RNA PVGIRHRLRG SANAVRIRAP QIGGSFAVWG GLFSTIDCGL VRLRGKEDPW NSITSGALTG AVLAARSGPL AMVGSAMMGG ILLALIEGVG ILLTRYTAQQ FRNAPPFLED PSQLPPKDG T PAPGYPSYQQ YH
Characteristics:	Human TIMM17B full-length ORF ( NP_005825.1, 1 a.a. - 172 a.a.) recombinant protein with GST-tag at N-terminal.
Purification:	in vitro wheat germ expression system

#### Target Details

Target:	TIMM17B
Alternative Name:	TIMM17B ( <a href="#">TIMM17B Products</a> )

## Target Details

Background:	Full Gene Name: translocase of inner mitochondrial membrane 17 homolog B (yeast) Synonyms: DXS9822, JM3, TIM17B
Gene ID:	10245
NCBI Accession:	<a href="#">NM_005834</a>

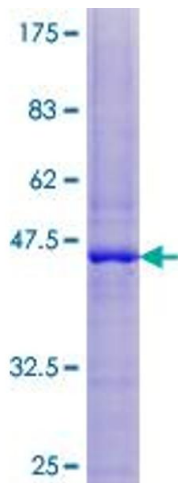
## Application Details

Application Notes:	Optimal working dilution should be determined by the investigator.
Comment:	Preparation method: in vitro, wheat germ expression system Product Quality tested by: 12.5% SDS-PAGE Stained with Coomassie Blue.
Restrictions:	For Research Use only

## Handling

Buffer:	50 mM Tris-HCl, 10 mM reduced Glutathione, pH =8.0 in the elution buffer.
Handling Advice:	Aliquot to avoid repeated freezing and thawing.
Storage:	-80 °C
Storage Comment:	Best use within three months from the date of receipt of this protein.

## Images



**Image 1.**