

Datasheet for ABIN1322784  
**TIMM9 Protein (AA 1-89) (GST tag)**



[Go to Product page](#)

1 Image

## Overview

Quantity:	10 µg
Target:	TIMM9
Protein Characteristics:	AA 1-89
Origin:	Human
Source:	Wheat germ
Protein Type:	Recombinant
Purification tag / Conjugate:	This TIMM9 protein is labelled with GST tag.
Application:	ELISA, Western Blotting (WB), Affinity Purification (AP), Antibody Array (AA)

## Product Details

Purpose:	TIMM9 (Human) Recombinant Protein (P01)
Sequence:	MAAQIPESDQ IKQFKEFLGT YNKL TETCFL DCVKDFTTRE VKPEETTCSE HCLQKYLKMT QRISMRFQEY HIQQNEALAA KAGLLGQPR
Characteristics:	Human TIMM9 full-length ORF ( AAH20213, 1 a.a. - 89 a.a.) recombinant protein with GST-tag at N-terminal.
Purification:	in vitro wheat germ expression system

## Target Details

Target:	TIMM9
Alternative Name:	TIMM9 ( <a href="#">TIMM9 Products</a> )

## Target Details

Background:	Full Gene Name: translocase of inner mitochondrial membrane 9 homolog (yeast) Synonyms: TIM9,TIM9A
Gene ID:	26520
Pathways:	<a href="#">Sensory Perception of Sound</a> , <a href="#">SARS-CoV-2 Protein Interactome</a>

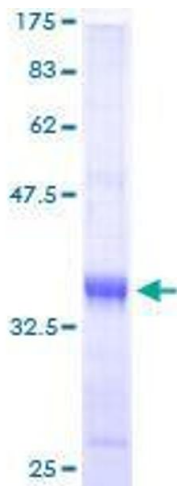
## Application Details

Application Notes:	Optimal working dilution should be determined by the investigator.
Comment:	Preparation method: in vitro, wheat germ expression system Product Quality tested by: 12.5% SDS-PAGE Stained with Coomassie Blue.
Restrictions:	For Research Use only

## Handling

Buffer:	50 mM Tris-HCl, 10 mM reduced Glutathione, pH =8.0 in the elution buffer.
Handling Advice:	Aliquot to avoid repeated freezing and thawing.
Storage:	-80 °C
Storage Comment:	Best use within three months from the date of receipt of this protein.

## Images



**Image 1.**