



[Go to Product page](#)

Datasheet for ABIN1322812

TIRAP Protein (AA 1-256) (GST tag)

1 Image

Overview

Quantity:	10 µg
Target:	TIRAP
Protein Characteristics:	AA 1-256
Origin:	Human
Source:	Wheat germ
Protein Type:	Recombinant
Purification tag / Conjugate:	This TIRAP protein is labelled with GST tag.
Application:	Western Blotting (WB), ELISA, Affinity Purification (AP), Antibody Array (AA)

Product Details

Purpose:	TIRAP (Human) Recombinant Protein (P01)
Sequence:	MASSTSLPAP GSRPKKPLGK MADWFRQTLL KKPCKRPNSP ESTSSDASQP TSQDSPLPPS LSSVTSPSLP PTHASDSGSS RWSKDYDVCV CHSEEDLVAA QDLVSYLEGS TASLRCFLQL RDATPGGAIV SELCQALSSS HCRVLLITPG FLQDPWCKYQ MLQALTEAPG AEGCTIPLLS GLSRAAYPPE LRFMYVVDGR GPDGGFRQVK EAVMRYLQTL SWHLLYHGTP EIGVKLETEN PCRASDSHKC DKRYRE
Characteristics:	Human TIRAP full-length ORF (AAH32474.1, 1 a.a. - 256 a.a.) recombinant protein with GST-tag at N-terminal.
Purification:	in vitro wheat germ expression system

Target Details

Target:	TIRAP
Alternative Name:	TIRAP (TIRAP Products)
Background:	Full Gene Name: toll-interleukin 1 receptor (TIR) domain containing adaptor protein Synonyms: FLJ42305,Mal,wyatt
Gene ID:	114609
Pathways:	TLR Signaling , Activation of Innate immune Response , Cellular Response to Molecule of Bacterial Origin , Toll-Like Receptors Cascades

Application Details

Application Notes:	Optimal working dilution should be determined by the investigator.
Comment:	Preparation method: in vitro, wheat germ expression system Product Quality tested by: 12.5% SDS-PAGE Stained with Coomassie Blue.
Restrictions:	For Research Use only

Handling

Buffer:	50 mM Tris-HCl, 10 mM reduced Glutathione, pH =8.0 in the elution buffer.
Handling Advice:	Aliquot to avoid repeated freezing and thawing.
Storage:	-80 °C
Storage Comment:	Best use within three months from the date of receipt of this protein.

Images

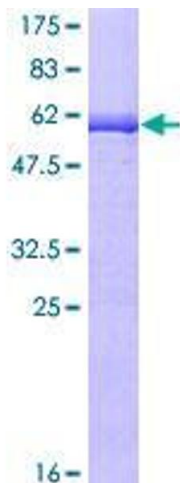


Image 1.