

Datasheet for ABIN1322832  
**TLCD1 Protein (AA 1-247) (GST tag)**



[Go to Product page](#)

1 Image

Overview

Quantity:	25 µg
Target:	TLCD1
Protein Characteristics:	AA 1-247
Origin:	Human
Source:	Wheat germ
Protein Type:	Recombinant
Purification tag / Conjugate:	This TLCD1 protein is labelled with GST tag.
Application:	ELISA, Western Blotting (WB), Affinity Purification (AP), Antibody Array (AA)

Product Details

Purpose:	TLCD1 (Human) Recombinant Protein (P01)
Sequence:	MPRLLHPALP LLLGATLTFR ALRRALCRLP LPVHVRADPL RTWRWHNLLV SFAHSIVSGI WALLCVWQTP DMLVEIETAW SLSGYLLVCF SAGYFIHDTV DIVASGQTRA SWEYLVHHVM AMGAFFSGIF WSSFVGGGVL TLLVEVSNIFF LTIRMMMKIS NAQDHLLYRV NKYVNLVMYF LFRLAPQAYL THFFLRYVNQ RTLGTFLLLGI LLMLDVMIII YFSRLLRSDF CPEHVPKKQH KDKFLTE
Characteristics:	Human TLCD1 full-length ORF ( NP_612472.1, 1 a.a. - 247 a.a.) recombinant protein with GST-tag at N-terminal.
Purification:	in vitro wheat germ expression system

Target Details

Target:	TLCD1
---------	-------

## Target Details

---

Alternative Name:	TLCD1 ( <a href="#">TLCD1 Products</a> )
Background:	Full Gene Name: TLC domain containing 1 Synonyms:
Gene ID:	116238
NCBI Accession:	<a href="#">NM_138463</a>

## Application Details

---

Application Notes:	Optimal working dilution should be determined by the investigator.
Comment:	Preparation method: in vitro, wheat germ expression system Product Quality tested by: 12.5% SDS-PAGE Stained with Coomassie Blue.
Restrictions:	For Research Use only

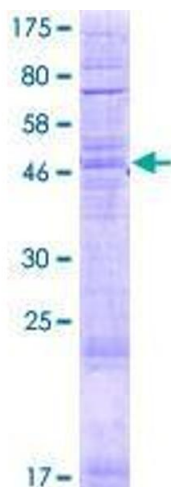
## Handling

---

Buffer:	50 mM Tris-HCl, 10 mM reduced Glutathione, pH =8.0 in the elution buffer.
Handling Advice:	Aliquot to avoid repeated freezing and thawing.
Storage:	-80 °C
Storage Comment:	Best use within three months from the date of receipt of this protein.

## Images

---



**Image 1.**