

Datasheet for ABIN1322833  
**TLE1 Protein (AA 1-770) (GST tag)**



[Go to Product page](#)

1 Image

Overview

Quantity:	10 µg
Target:	TLE1
Protein Characteristics:	AA 1-770
Origin:	Human
Source:	Wheat germ
Protein Type:	Recombinant
Purification tag / Conjugate:	This TLE1 protein is labelled with GST tag.
Application:	ELISA, Western Blotting (WB), Affinity Purification (AP), Antibody Array (AA)

Product Details

Purpose:	TLE1 (Human) Recombinant Protein (P01)
Sequence:	MF PQSRHPTP HQAAGQPFKF TIPESLDRIK EEFQLQAQY HSLKLECEKL ASEKTEMQRH YVMYYEMSYG LNIEMHKQTE IAKRLNTICA QVIPFLSQEH QQQVAQAVER AKQVTMAELN AIIGQQQLQA QHLSHGHP VPLTPHPSGL QPPGIPPLGG SAGLLALSSA LSGQSHLAIK DDKKHHDAEH HRDREPGTSN SLLVPDSLRLG TDKRRNGPEF SNDIKKRKVD DKDSSHYDSD GDKSDDNLVW DVSNEPSSP RASPAHSPRE NGIDKNRLK KDASSSPAST ASSASSTSLK SKEMSLHEKA STPVLKSTTP TPRSDMPTPG TSATPGLRPG LGKPPAIDPL VNQAAAGLRT PLAVPGPYPA PFGMVPHAGM NGELTSPGAA YASLHNMSQP MSAAAAAAV VAYGRSPMVG FDPPPHMRVP TIPPNLAGIP GGKPAYSFHV TADGQMOPVP FPPDALIGPG IPRHARQINT LNHGEVCAV TISNPTRHVY TGGKGCVKVW DISHPGNKSP VSQLDCLNRD NYIRSCKLLP DGCTLIVGGE ASTLSIWDLA APTPRIKAE TSSAPACYAL AISPDSKVCF SCCSDGNIAV WDLHNQTLVR QFQGHTDGAS CIDISNDGTK LWTGGLDNTV RSWDLREGRQ LQQHDFTSQI

## Product Details

---

FSLGYCPTGE WLAVGMESSEN VEVLHVNKPD KYQLHLHESC VLSLKFAYCG KWFVSTGKDN  
LLNAWRTPYG ASIFQSKESS SVLSCDISVD DKYIVTGSGD KKATVVEVIY

Characteristics: Human TLE1 full-length ORF ( NP\_005068.2, 1 a.a. - 770 a.a.) recombinant protein with GST-tag at N-terminal.

Purification: in vitro wheat germ expression system

## Target Details

---

Target: TLE1

Alternative Name: TLE1 ([TLE1 Products](#))

Background: Full Gene Name: transducin-like enhancer of split 1 (E(sp1) homolog, Drosophila)  
Synonyms: ESG,ESG1,GRG1

Gene ID: 7088

NCBI Accession: [NM\\_005077](#)

Pathways: [WNT Signaling](#), [SARS-CoV-2 Protein Interactome](#)

## Application Details

---

Application Notes: Optimal working dilution should be determined by the investigator.

Comment: Preparation method: in vitro, wheat germ expression system  
Product Quality tested by: 12.5% SDS-PAGE Stained with Coomassie Blue.

Restrictions: For Research Use only

## Handling

---

Buffer: 50 mM Tris-HCl, 10 mM reduced Glutathione, pH =8.0 in the elution buffer.

Handling Advice: Aliquot to avoid repeated freezing and thawing.

Storage: -80 °C

Storage Comment: Best use within three months from the date of receipt of this protein.

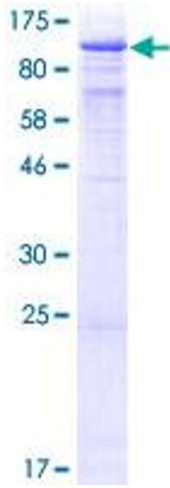


Image 1.