



[Go to Product page](#)

Datasheet for ABIN1322850

## Tolloid-Like 2 Protein (TLL2) (AA 1-1015) (GST tag)

### 1 Image

#### Overview

Quantity:	10 µg
Target:	Tolloid-Like 2 (TLL2)
Protein Characteristics:	AA 1-1015
Origin:	Human
Source:	Wheat germ
Protein Type:	Recombinant
Purification tag / Conjugate:	This Tolloid-Like 2 protein is labelled with GST tag.
Application:	ELISA, Western Blotting (WB), Affinity Purification (AP), Antibody Array (AA)

#### Product Details

Purpose:	TLL2 (Human) Recombinant Protein (P01)
Sequence:	<p>MPRATALGAL VSLLLLLPLP RGAGGLGERP DATADYSELD GEEGTEQQLE HYHDPCKAAV            FWGDIALDED DLKLFHIDKA RDWTKQTVGA TGHSTGGLEE QASESSPDTT AMDTGTKEAG            KDGRENTTLL HSPGTLHAAA KTFSPRVRRR TTSRTERIWP GGVIPYVIGG NFTGSQRAIF            KQAMRHWEKH TCVTFIERTD EESFIVFSYR TCGCCSYVGR RGGGPQAISI GKNCDKFGIV            AHELGHVVGF WHEHTRPDRD QHVTIIRENI QPGQEYNFLK MEAGEVSSLG ETYDFDSIMH            YARNTFSRGV FLDTILPRQD DNGVRPTIGQ RVRLSQGDIA QARKLYKCPA CGETLQDTTG            NFSAPGFPNG YPSYSHCVWR ISVTPGEKIV LNFTSMDLFK SRLCWYDYVE VRDGYWRKAP            LLGRFCGDKI PEPLVSTDSR LWVEFRSSSN ILKGFFFAAY EATCGGDMNK DAGQIQSPNY            PDDYRPSKEC VWRITVSEGF HVGLTFQAFE IERHDSCAYD YLEVRDGPTE ESALIGHFCG            YEKPEDVKSS SNRLWMKFVS DGSINKAGFA ANFFKEVDEC SWPDHGGCEH RCVNTLGSYK            CACDPGYELA ADKKMCEVAC GGFITKLNGT ITSPGWPKEY PTNKNCVWQV VAPAQYRISL</p>

## Product Details

---

QFEVFELEGN DVCKYDFVEV RSGLSPPDAKL HGRFCGSETP EVITSQSNNM RVEFKSDNTV  
SKRGFRAHFF SDKDECAKDN GGCQHECVNT FGSYLCRCRN GYWLHENGHD CKEAGCAHKI  
SSVEGTLASP NWPDKYPSRR ECTWNISSTA GHRVKLTFNE FEIEQHQECA YDHLEMYDGP  
DSLAPILGRF CGSKKPDTV ASGSSMFLRF YSDASVQRKG FQAVHSTECG GRLKAEVQTK  
ELYSHAQFGD NNYPSEARCD WVIVAEDGYG VELTFRTFEV EEEADCGYDY MEAYDGYDSS  
APRLGRFCGS GPLEEIYSAG DSLMIRFRTD DTINKKGFHA RYTSTKFQDA LHMKK

Characteristics: Human TLL2 full-length ORF ( AAI11600.1, 1 a.a. - 1015 a.a.) recombinant protein with GST-tag at N-terminal.

Purification: in vitro wheat germ expression system

## Target Details

---

Target: Tollid-Like 2 (TLL2)

Alternative Name: TLL2 ([TLL2 Products](#))

Background: Full Gene Name: tollid-like 2  
Synonyms: KIAA0932,MGC133312,MGC133313

Gene ID: 7093

## Application Details

---

Application Notes: Optimal working dilution should be determined by the investigator.

Comment: Preparation method: in vitro, wheat germ expression system  
Product Quality tested by: 12.5% SDS-PAGE Stained with Coomassie Blue.

Restrictions: For Research Use only

## Handling

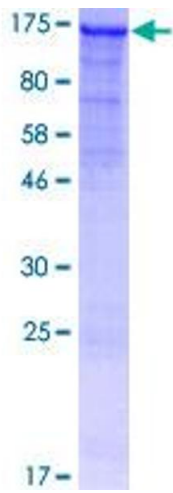
---

Buffer: 50 mM Tris-HCl, 10 mM reduced Glutathione, pH =8.0 in the elution buffer.

Handling Advice: Aliquot to avoid repeated freezing and thawing.

Storage: -80 °C

Storage Comment: Best use within three months from the date of receipt of this protein.



**Image 1.**