

Datasheet for ABIN1322882
TLR5 Protein (AA 351-450) (GST tag)



[Go to Product page](#)

1 Image

Overview

Quantity:	10 µg
Target:	TLR5
Protein Characteristics:	AA 351-450
Origin:	Human
Source:	Wheat germ
Protein Type:	Recombinant
Purification tag / Conjugate:	This TLR5 protein is labelled with GST tag.
Application:	Western Blotting (WB), ELISA, Affinity Purification (AP), Antibody Array (AA)

Product Details

Purpose:	TLR5 (Human) Recombinant Protein (Q03)
Sequence:	LYSSNFYGLP KVAYIDLQKN HIAIIQDQTF KFLEKLQTLD LRDNALTTIH FIPSIPDIFL SGNKLVTLPK INLTANLIHL SENRLENLDI LYFLLRVPHL
Characteristics:	Human TLR5 partial ORF (NP_003259.2, 351 a.a. - 450 a.a.) recombinant protein with GST-tag at N-terminal.
Purification:	in vitro wheat germ expression system

Target Details

Target:	TLR5
Alternative Name:	TLR5 (TLR5 Products)

Target Details

Background:	Full Gene Name: toll-like receptor 5 Synonyms: FLJ10052,MGC126430,MGC126431,SLEB1,TIL3
Gene ID:	7100
NCBI Accession:	NM_003268
Pathways:	TLR Signaling , Activation of Innate immune Response , Cellular Response to Molecule of Bacterial Origin , Toll-Like Receptors Cascades

Application Details

Application Notes:	Optimal working dilution should be determined by the investigator.
Comment:	Preparation method: in vitro, wheat germ expression system Product Quality tested by: 12.5% SDS-PAGE Stained with Coomassie Blue
Restrictions:	For Research Use only

Handling

Buffer:	50 mM Tris-HCl, 10 mM reduced Glutathione, pH =8.0 in the elution buffer.
Handling Advice:	Aliquot to avoid repeated freezing and thawing.
Storage:	-80 °C
Storage Comment:	Best use within three months from the date of receipt of this protein.

Images

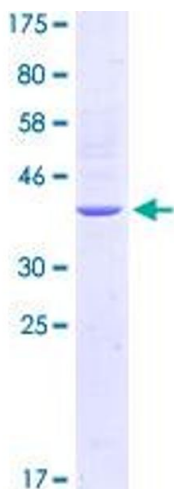


Image 1.