



[Go to Product page](#)

Datasheet for ABIN1322904

## TM4SF4 Protein (AA 1-202) (GST tag)

### 1 Image

#### Overview

Quantity:	10 µg
Target:	TM4SF4
Protein Characteristics:	AA 1-202
Origin:	Human
Source:	Wheat germ
Protein Type:	Recombinant
Purification tag / Conjugate:	This TM4SF4 protein is labelled with GST tag.
Application:	ELISA, Western Blotting (WB), Affinity Purification (AP), Antibody Array (AA)

#### Product Details

Purpose:	TM4SF4 (Human) Recombinant Protein (P01)
Sequence:	MCTGGCARCL GGTLIPLAFF GFLANILLFF PGGKVIDDND HLSQEIWFFG GILGSGVLMII FPALVFLGLK NNDCCGCCGN EGCGKRFAMF TSTIFAVVGF LGAGYSFIIS AISINKGPKC LMANSTWGYP FHDGDYLNDE ALWNKCREPL NVVPWNLTLF SILLVGGGIQ MVLCAIQVVN GLLGTLGDC QCCGCCGGDG PV
Characteristics:	Human TM4SF4 full-length ORF ( NP_004608.1, 1 a.a. - 202 a.a.) recombinant protein with GST-tag at N-terminal.
Purification:	in vitro wheat germ expression system

#### Target Details

Target:	TM4SF4
---------	--------

## Target Details

Alternative Name:	TM4SF4 ( <a href="#">TM4SF4 Products</a> )
Background:	Full Gene Name: transmembrane 4 L six family member 4 Synonyms: FLJ31015,ILTMP,il-TMP
Gene ID:	7104
NCBI Accession:	<a href="#">NM_004617</a>

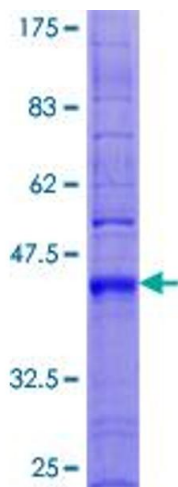
## Application Details

Application Notes:	Optimal working dilution should be determined by the investigator.
Comment:	Preparation method: in vitro, wheat germ expression system Product Quality tested by: 12.5% SDS-PAGE Stained with Coomassie Blue.
Restrictions:	For Research Use only

## Handling

Buffer:	50 mM Tris-HCl, 10 mM reduced Glutathione, pH =8.0 in the elution buffer.
Handling Advice:	Aliquot to avoid repeated freezing and thawing.
Storage:	-80 °C
Storage Comment:	Best use within three months from the date of receipt of this protein.

## Images



**Image 1.**