



[Go to Product page](#)

Datasheet for ABIN1322912

## TMC6 Protein (AA 1-444) (GST tag)

### 1 Image

#### Overview

Quantity:	25 µg
Target:	TMC6
Protein Characteristics:	AA 1-444
Origin:	Human
Source:	Wheat germ
Protein Type:	Recombinant
Purification tag / Conjugate:	This TMC6 protein is labelled with GST tag.
Application:	ELISA, Western Blotting (WB), Affinity Purification (AP), Antibody Array (AA)

#### Product Details

Purpose:	EVER1 (Human) Recombinant Protein (P01)
Sequence:	MAHSFGESYR VGSTSGIHAI TVFCSWDYKV TQKRASRLQQ DNIRTRLKEL LAEWQLRHSP RSVCGRLRQA AVLGLVWLLC LGTALGCAVA VHVSEFMIQ SPEAAGQEAV LLVLPLVVGL LNLGAPYLCR VLAALEPHDS PVLEVYVAIC RNLILKLAIL GTLCYHWLGR RVGVLQGCW EDFVGQELYR FLVMDFVLMML LDTLFGELVW RIISEKKLKR RRKPEFDIAR NVLELIYGQT LTWLGVLVFP LLPAVQIIKL LLVYVKKTS LLANCQAPRR PWLASHMSTV FLTLLCFPAF LGAAVFLCYA VWQVKPSSTC GPFRTLDTMY EAGRVWVRHL EAAGPRVSWL PWVHRYLMEN TFFVFLVSAL LLAVIYLNIIQ VVRGQRKVIC LLKEQISNEG EDKIFLINKL HSIYERKERE ERSRVGTTEE AAAPPALLTD EQDA
Characteristics:	Human EVER1 full-length ORF ( AAH35648, 1 a.a. - 444 a.a.) recombinant protein with GST-tag at N-terminal.

## Product Details

---

Purification: in vitro wheat germ expression system

## Target Details

---

Target: TMC6

Alternative Name: TMC6 ([TMC6 Products](#))

Background: Full Gene Name: transmembrane channel-like 6  
Synonyms: EV1,EVER1,EVIN1,FLJ17776,LAK-4P

Gene ID: 11322

## Application Details

---

Application Notes: Optimal working dilution should be determined by the investigator.

Comment: Preparation method: in vitro, wheat germ expression system  
Product Quality tested by: 12.5% SDS-PAGE Stained with Coomassie Blue.

Restrictions: For Research Use only

## Handling

---

Buffer: 50 mM Tris-HCl, 10 mM reduced Glutathione, pH =8.0 in the elution buffer.

Handling Advice: Aliquot to avoid repeated freezing and thawing.

Storage: -80 °C

Storage Comment: Best use within three months from the date of receipt of this protein.

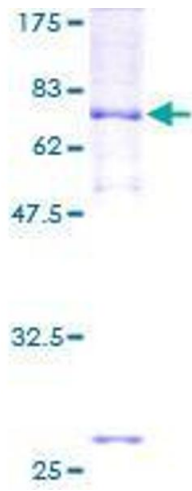


Image 1.