



[Go to Product page](#)

Datasheet for ABIN1322918

## TMCO2 Protein (AA 1-182) (GST tag)

### 1 Image

#### Overview

Quantity:	10 µg
Target:	TMCO2
Protein Characteristics:	AA 1-182
Origin:	Human
Source:	Wheat germ
Protein Type:	Recombinant
Purification tag / Conjugate:	This TMCO2 protein is labelled with GST tag.
Application:	ELISA, Western Blotting (WB), Affinity Purification (AP), Antibody Array (AA)

#### Product Details

Purpose:	TMCO2 (Human) Recombinant Protein (P01)
Sequence:	MSTSSSSSWD NLLESLSLST VWNWIQASFL GETSAPQQTSLGLLDNLAPA VQIILRISFL ILLGIGIYAL WKRSIQSIQK TLLFVITLYK LYKKGSHIFE ALLANPEGSG LRIQDNNNLF LSLGLQEKIL KKLKTVENKM KNLEGIIVAQ KPATKRDCSS EPYCSCSDCQ SPLSTSGFTS PI
Characteristics:	Human TMCO2 full-length ORF ( NP_001008740.1, 1 a.a. - 182 a.a.) recombinant protein with GST-tag at N-terminal.
Purification:	in vitro wheat germ expression system

#### Target Details

Target:	TMCO2
Alternative Name:	TMCO2 ( <a href="#">TMCO2 Products</a> )

## Target Details

Background:	Full Gene Name: transmembrane and coiled-coil domains 2 Synonyms: MGC131705,dJ39G22.2
Gene ID:	127391
NCBI Accession:	<a href="#">NM_001008740</a>

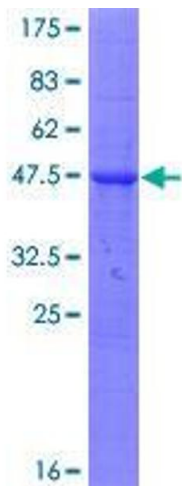
## Application Details

Application Notes:	Optimal working dilution should be determined by the investigator.
Comment:	Preparation method: in vitro, wheat germ expression system Product Quality tested by: 12.5% SDS-PAGE Stained with Coomassie Blue.
Restrictions:	For Research Use only

## Handling

Buffer:	50 mM Tris-HCl, 10 mM reduced Glutathione, pH =8.0 in the elution buffer.
Handling Advice:	Aliquot to avoid repeated freezing and thawing.
Storage:	-80 °C
Storage Comment:	Best use within three months from the date of receipt of this protein.

## Images



**Image 1.**