



[Go to Product page](#)

Datasheet for ABIN1322925

TMED1 Protein (AA 1-227) (GST tag)

1 Image

Overview

Quantity:	10 µg
Target:	TMED1
Protein Characteristics:	AA 1-227
Origin:	Human
Source:	Wheat germ
Protein Type:	Recombinant
Purification tag / Conjugate:	This TMED1 protein is labelled with GST tag.
Application:	ELISA, Western Blotting (WB), Affinity Purification (AP), Antibody Array (AA)

Product Details

Purpose:	TMED1 (Human) Recombinant Protein (P01)
Sequence:	MMAAGAALAL ALWLLMPPVE VGGAGPPPIQ DGEFTFLLPA GRKQCFYQSA PANASLETEY QVIGGAGLDV DFTLESPQGV LLVSES RKAD GVHTVEPTEA GDYKLCFDNS FSTISEKLVF FELIFDSLQD DEEVEGWAEA VEPEEMLDVK MEDIKESIET MRTRLRSIQ MLTLLRAFEA RDRNLQEGNL ERVNFWSAVN VAVLLLAVL QVCTLKRFFQ DKRPVPT
Characteristics:	Human TMED1 full-length ORF (NP_006849.1, 1 a.a. - 227 a.a.) recombinant protein with GST-tag at N-terminal.
Purification:	in vitro wheat germ expression system

Target Details

Target:	TMED1
---------	-------

Target Details

Alternative Name:	TMED1 (TMED1 Products)
Background:	Full Gene Name: transmembrane emp24 protein transport domain containing 1 Synonyms: IL1RL1LG,IL1r11I,MGC1270,ST2L
Gene ID:	11018
NCBI Accession:	NM_006858

Application Details

Application Notes:	Optimal working dilution should be determined by the investigator.
Comment:	Preparation method: in vitro, wheat germ expression system Product Quality tested by: 12.5% SDS-PAGE Stained with Coomassie Blue.
Restrictions:	For Research Use only

Handling

Buffer:	50 mM Tris-HCl, 10 mM reduced Glutathione, pH =8.0 in the elution buffer.
Handling Advice:	Aliquot to avoid repeated freezing and thawing.
Storage:	-80 °C
Storage Comment:	Best use within three months from the date of receipt of this protein.

Images

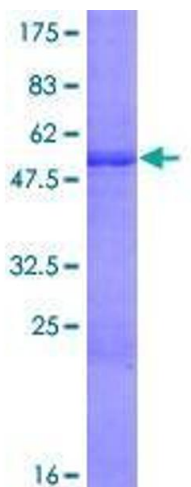


Image 1.