



[Go to Product page](#)

Datasheet for ABIN1322933

TMED4 Protein (AA 1-227) (GST tag)

1 Image

Overview

Quantity:	10 µg
Target:	TMED4
Protein Characteristics:	AA 1-227
Origin:	Human
Source:	Wheat germ
Protein Type:	Recombinant
Purification tag / Conjugate:	This TMED4 protein is labelled with GST tag.
Application:	ELISA, Western Blotting (WB), Affinity Purification (AP), Antibody Array (AA)

Product Details

Purpose:	TMED4 (Human) Recombinant Protein (P01)
Sequence:	MAGVGAGPLR AMGRQALLLL ALCATGAQGL YFHIGETEKR CFIEEIPDET MVIGNYRTQM WDKQKEVFLP STPGLGMHVE VKDPDGKVVV SRQYGSEGRF TFTSHTPGDH QICLHSNSTR MALFAGGKLR VHLDIQVGEH ANNYPEIAAK DKLTEQLRA RQLLDQVEQI QKEQDYQRYR EERFRLTSES TNQRVLWWSI AQTVILILTG IWQMRHLKSF FEAKKLV
Characteristics:	Human TMED4 full-length ORF (NP_872353.2, 1 a.a. - 227 a.a.) recombinant protein with GST-tag at N-terminal.
Purification:	in vitro wheat germ expression system

Target Details

Target:	TMED4
---------	-------

Target Details

Alternative Name:	TMED4 (TMED4 Products)
Background:	Full Gene Name: transmembrane emp24 protein transport domain containing 4 Synonyms: ERS25,HNLF
Gene ID:	222068
NCBI Accession:	NM_182547

Application Details

Application Notes:	Optimal working dilution should be determined by the investigator.
Comment:	Preparation method: in vitro, wheat germ expression system Product Quality tested by: 12.5% SDS-PAGE Stained with Coomassie Blue.
Restrictions:	For Research Use only

Handling

Buffer:	50 mM Tris-HCl, 10 mM reduced Glutathione, pH =8.0 in the elution buffer.
Handling Advice:	Aliquot to avoid repeated freezing and thawing.
Storage:	-80 °C
Storage Comment:	Best use within three months from the date of receipt of this protein.

Images

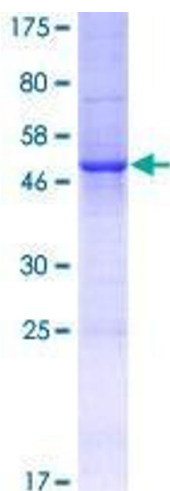


Image 1.