



[Go to Product page](#)

Datasheet for ABIN1322951

## TMEM11 Protein (AA 128-192) (GST tag)

### 1 Image

#### Overview

Quantity:	10 µg
Target:	TMEM11
Protein Characteristics:	AA 128-192
Origin:	Human
Source:	Wheat germ
Protein Type:	Recombinant
Purification tag / Conjugate:	This TMEM11 protein is labelled with GST tag.
Application:	ELISA, Western Blotting (WB), Affinity Purification (AP), Antibody Array (AA)

#### Product Details

Purpose:	C17orf35 (Human) Recombinant Protein (Q01)
Sequence:	FDPCKYQVE YDAYKLSRLP LHTLTSSTPV VLVRKDDLHR KRLHNTIALA ALVYCVKKIY ELYAV
Characteristics:	Human C17orf35 partial ORF ( NP_003867, 128 a.a. - 192 a.a.) recombinant protein with GST-tag at N-terminal.
Purification:	in vitro wheat germ expression system

#### Target Details

Target:	TMEM11
Alternative Name:	TMEM11 ( <a href="#">TMEM11 Products</a> )
Background:	Full Gene Name: transmembrane protein 11

## Target Details

---

Synonyms: C17orf35,PM1,PMI

Gene ID: 8834

NCBI Accession: [NM\\_003876](#)

## Application Details

---

Application Notes: Optimal working dilution should be determined by the investigator.

Comment: Preparation method: in vitro, wheat germ expression system  
Product Quality tested by: 12.5% SDS-PAGE Stained with Coomassie Blue.

Restrictions: For Research Use only

## Handling

---

Buffer: 50 mM Tris-HCl, 10 mM reduced Glutathione, pH =8.0 in the elution buffer.

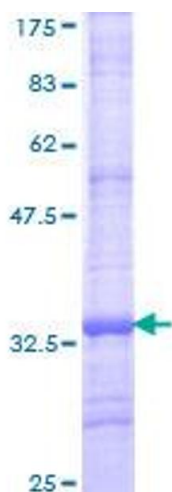
Handling Advice: Aliquot to avoid repeated freezing and thawing.

Storage: -80 °C

Storage Comment: Best use within three months from the date of receipt of this protein.

## Images

---



**Image 1.**