



[Go to Product page](#)

Datasheet for ABIN1322953

TMEM110 Protein (AA 1-294) (GST tag)

1 Image

Overview

Quantity:	10 µg
Target:	TMEM110
Protein Characteristics:	AA 1-294
Origin:	Human
Source:	Wheat germ
Protein Type:	Recombinant
Purification tag / Conjugate:	This TMEM110 protein is labelled with GST tag.
Application:	ELISA, Western Blotting (WB), Affinity Purification (AP), Antibody Array (AA)

Product Details

Purpose:	TMEM110 (Human) Recombinant Protein (P01)
Sequence:	<p>MQGPAGNASR GLPGGPPSTV ASGAGRCESE ALMHSFGIFL QLLGVVAFS TLMLKRFREP KHERRPWRIW FLDTSKQAIG MLFIHFANVY LADLTEEDPC SLYLINFLLD ATVGMLLIYV GVRVSVLVE WQQWESLRFGEYGDPLQCGA WVGQCALYIV IMIFEKSVVF IVDLILQWKK VALLNPIENP DLKLAIVMLI VPFVNALMF WVDNFLMRK GKTKAKLEER GANQDSRNGS KVRVYRAASH EESESEILIS ADDEMEESDV EEDLRRLTPL KPVKKKKHRF GLPV</p>
Characteristics:	Human TMEM110 full-length ORF (NP_940965.1, 1 a.a. - 294 a.a.) recombinant protein with GST-tag at N-terminal.
Purification:	in vitro wheat germ expression system

Target Details

Target:	TMEM110
Alternative Name:	TMEM110 (TMEM110 Products)
Background:	Full Gene Name: transmembrane protein 110 Synonyms: DKFZp667E1121,MGC52022
Gene ID:	375346
NCBI Accession:	NM_198563

Application Details

Application Notes:	Optimal working dilution should be determined by the investigator.
Comment:	Preparation method: in vitro, wheat germ expression system Product Quality tested by: 12.5% SDS-PAGE Stained with Coomassie Blue.
Restrictions:	For Research Use only

Handling

Buffer:	50 mM Tris-HCl, 10 mM reduced Glutathione, pH =8.0 in the elution buffer.
Handling Advice:	Aliquot to avoid repeated freezing and thawing.
Storage:	-80 °C
Storage Comment:	Best use within three months from the date of receipt of this protein.

Images

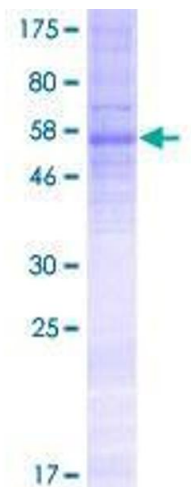


Image 1.